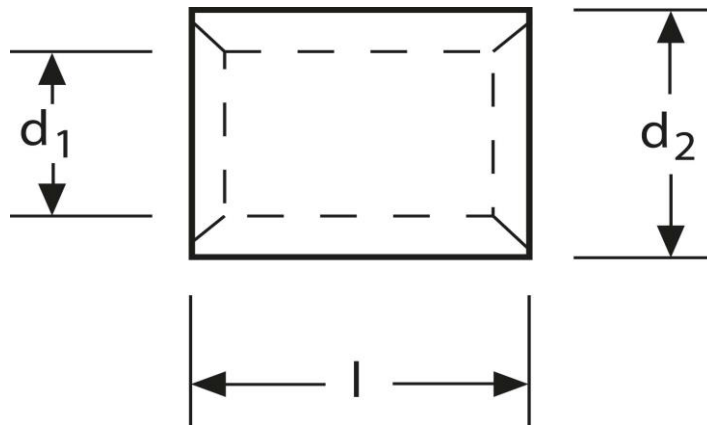


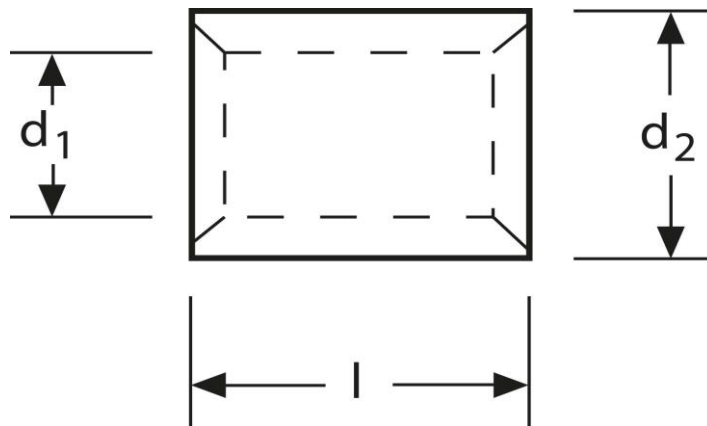
Parallelverbinder 2,5 - 6 mm²



Art.Nr.	Werkstoff	Oberfläche		
K 333006	E-CU	galv. Sn	1,50 / 1000	1.000
	d_1	l	d_2	s
in mm:	3,6	9	5,6	1

Stand: 11.08.2014

Parallel connectors 2,5 - 6 mm²



part no.	material	surface		
K 333006	E-CU	tin-plated	1,50 / 1000	1.000
	d_1	l	d_2	s
in mm:	3,6	9	5,6	1,0

date: 11.08.2014