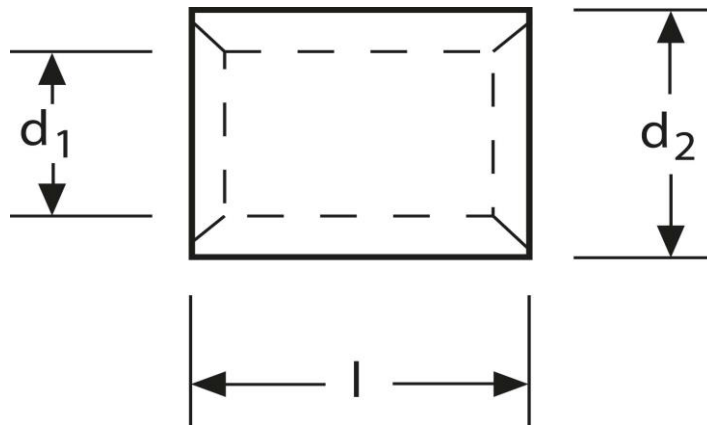


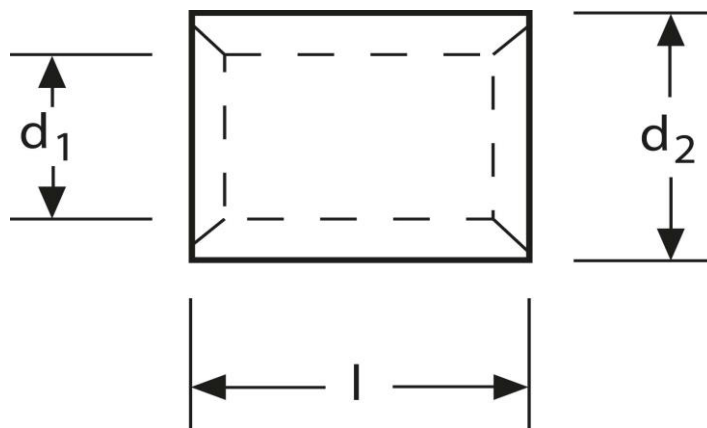
## Parallelverbinder 4 mm<sup>2</sup>



Art.Nr.	Werkstoff	Oberfläche		
K 333004	E-CU	galv. Sn	0,80 / 1000	100
	$d_1$	$l$	$d_2$	$s$
in mm:	3,0	7	5	1

Stand: 16.01.2020

## Parallel connectors 4 mm<sup>2</sup>



part no.	material	surface		
K 333004	E-CU	tin-plated	0,80 / 1000	100
	$d_1$	$l$	$d_2$	$s$
in mm:	3,0	7	5,0	1,0

date: 16.01.2020