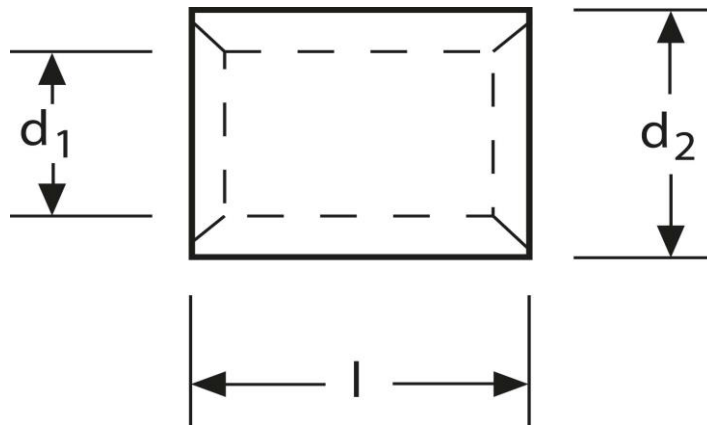


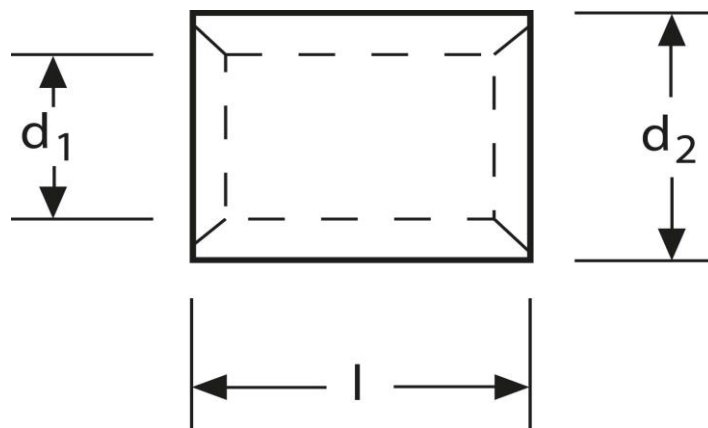
Parallelverbinder 1 - 2,5 mm²



Art.Nr.	Werkstoff	Oberfläche		
K 333002	E-CU	galv. Sn	0,90 / 1000	1.000
	d_1	l	d_2	s
in mm:	2,3	8	3,9	0,8

Stand: 11.08.2014

Parallel connectors 1 - 2,5 mm²



part no.	material	surface		
K 333002	E-CU	tin-plated	0,90 / 1000	1.000
	d_1	l	d_2	s
in mm:	2,3	8	3,9	0,8

date: 11.08.2014