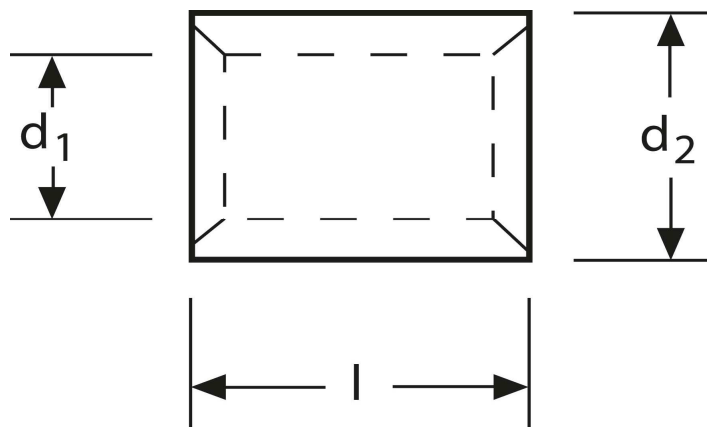
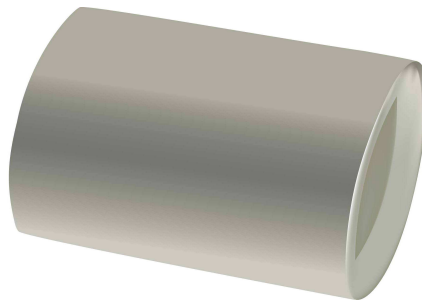


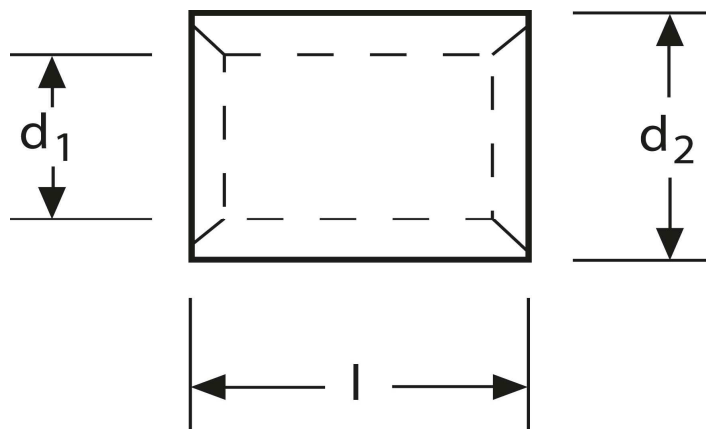
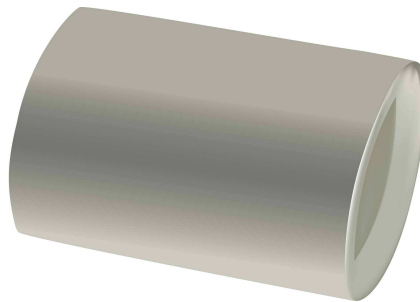
## Parallelverbinder 0,5 mm<sup>2</sup>



Art.Nr.	Werkstoff	Oberfläche		
K 333000	E-CU	galv. Sn	0,18 / 1000	2.000
	$d_1$	$l$	$d_2$	$s$
in mm:	1,2	5	2	0,4

Stand: 11.08.2014

**Parallel connectors**  
**0,5 mm<sup>2</sup>**



part no.	material	surface		
K 333000	E-CU	tin-plated	0,18 / 1000	2.000
	$d_1$	$l$	$d_2$	$s$
in mm:	1,2	5	2,0	0,4

date: 11.08.2014