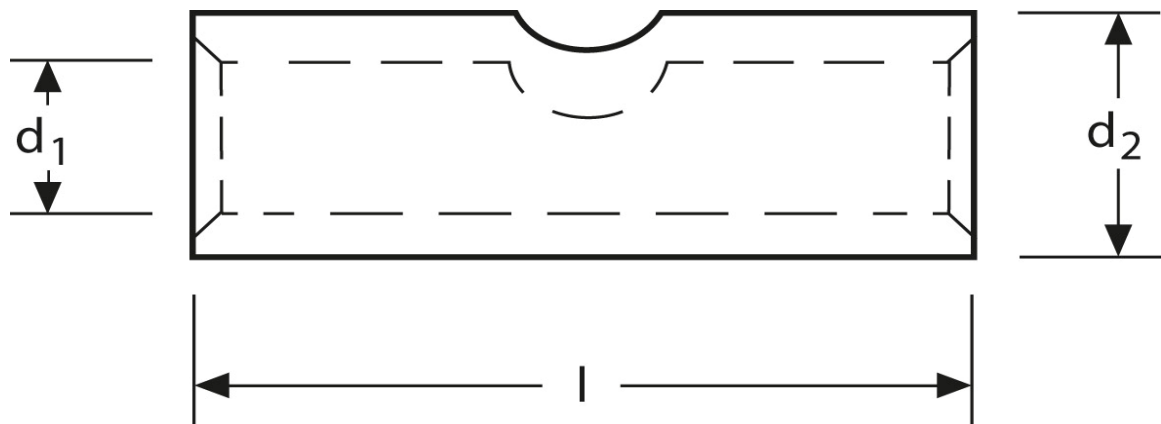
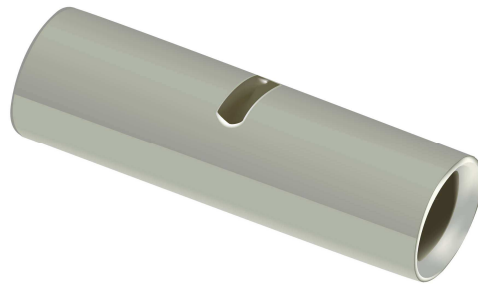


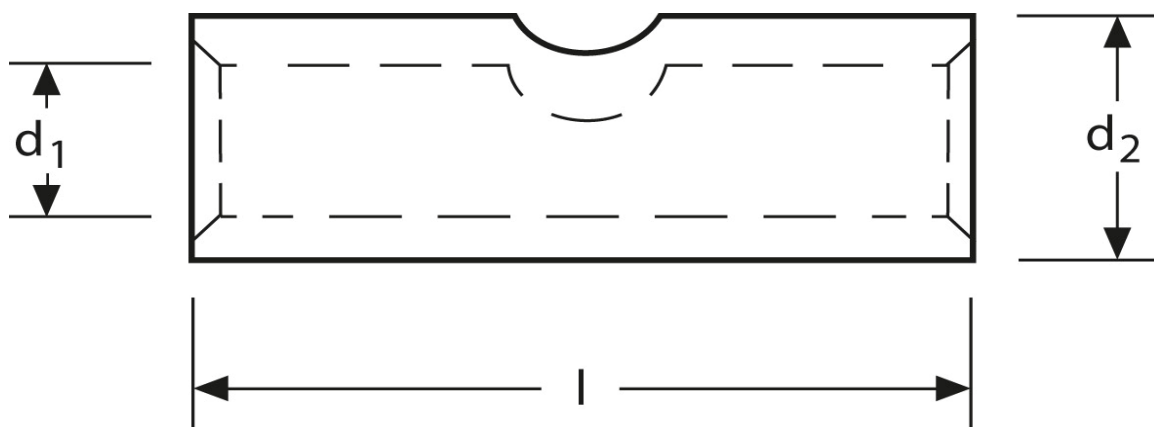
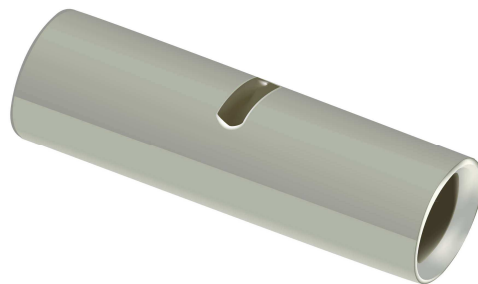
Stoßverbinder 95 mm²



Art.Nr.	Werkstoff	Oberfläche		
K 332095	E-CU	galv. Sn	59,00 / 1000	50
	d_1	l	d_2	s
in mm:	15,0	48	20	2,5

Stand: 07.08.2014

Butt - connectors
95 mm²



part no.	material	surface		
K 332095	E-CU	tin-plated	59,00 / 1000	50
	d_1	l	d_2	s
in mm:	15,0	48	20,0	2,5

date: 07.08.2014