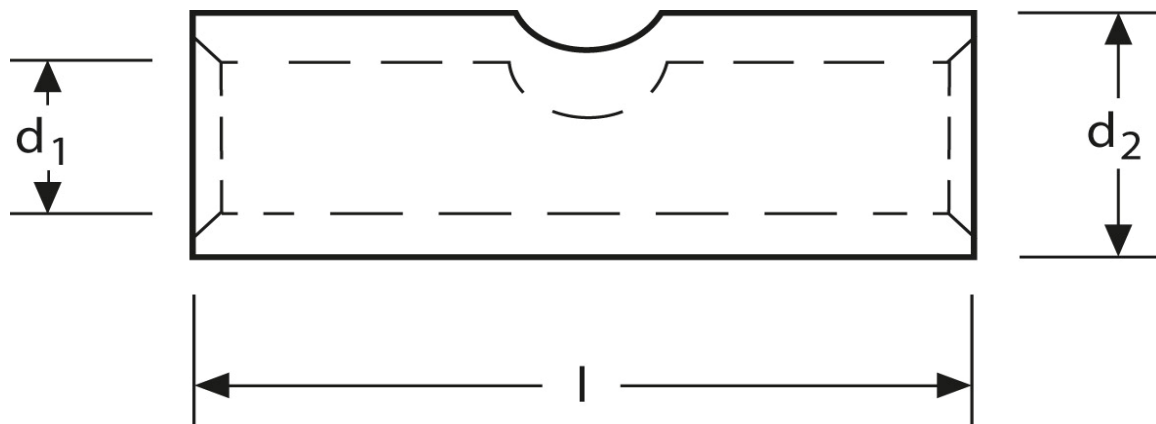
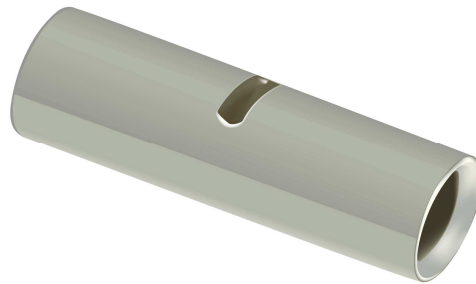


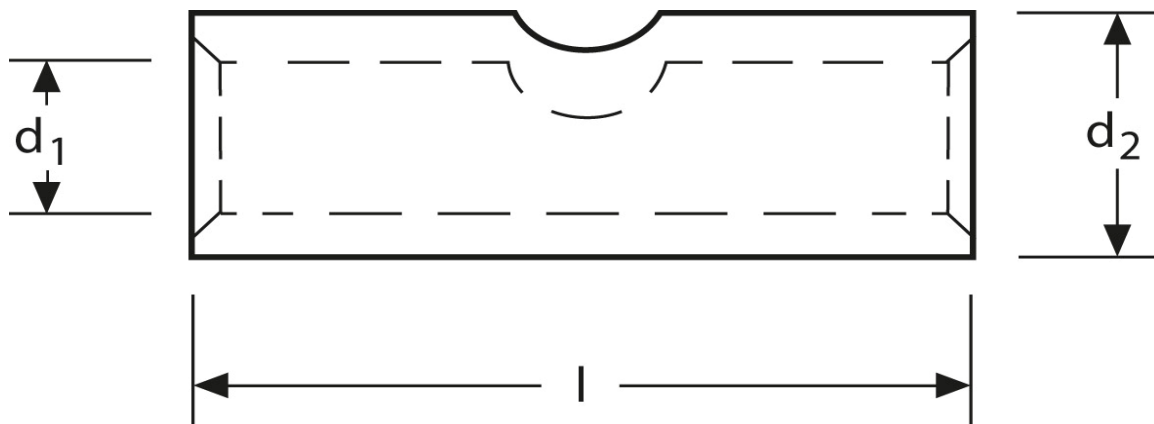
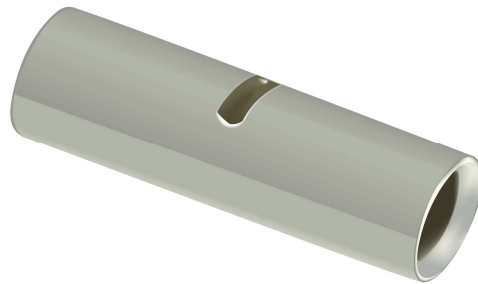
Stoßverbinder 35 mm²



Art.Nr.	Werkstoff	Oberfläche		
K 332035	E-CU	galv. Sn	13,00 / 1000	200
	d_1	l	d_2	s
in mm:	9,0	32	12,2	1,6

Stand: 07.08.2014

Butt - connectors 35 mm²



part no.	material	surface		
K 332035	E-CU	tin-plated	13,00 / 1000	200
	d₁	l	d₂	s
in mm:	9,0	32	12,2	1,6

date: 07.08.2014