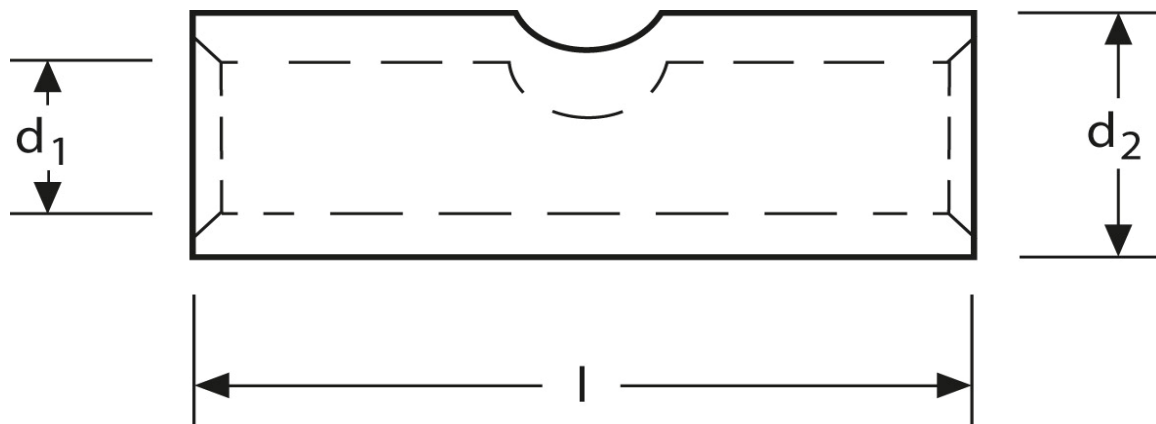
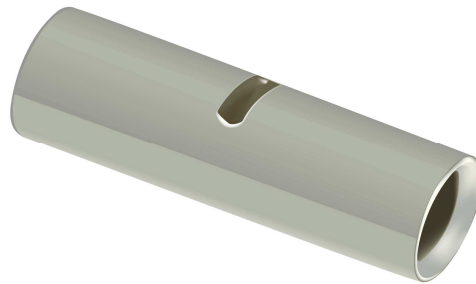


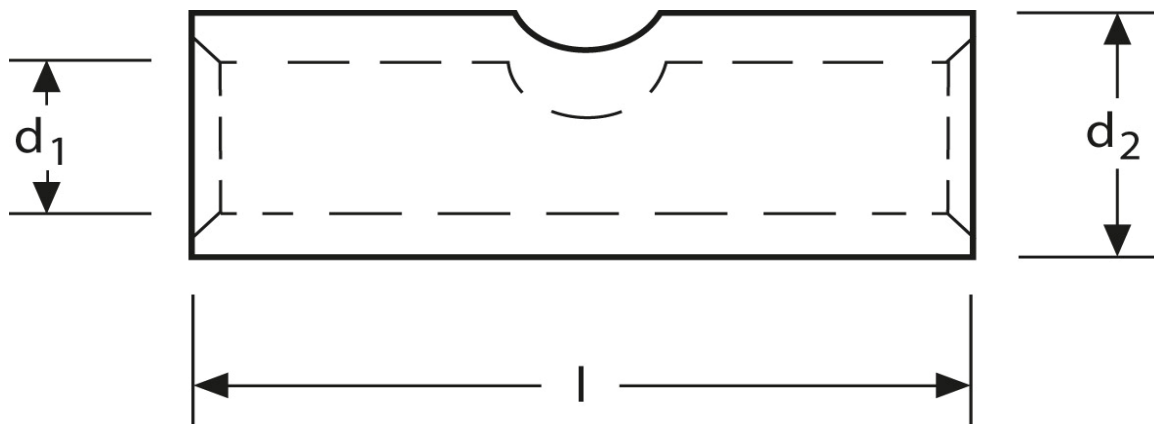
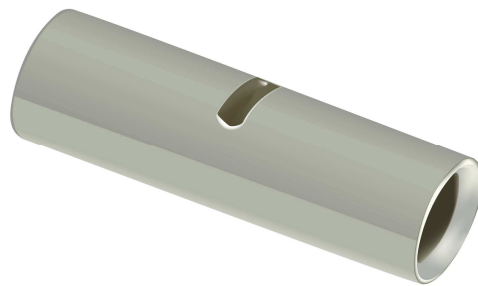
Stoßverbinder 10 mm²



Art.Nr.	Werkstoff	Oberfläche		
K 332010	E-CU	galv. Sn	3,50 / 1000	500
	d_1	l	d_2	s
in mm:	4,5	21	6,7	1,1

Stand: 07.08.2014

Butt - connectors
10 mm²



part no.	material	surface		
K 332010	E-CU	tin-plated	3,50 / 1000	500
	d_1	l	d_2	s
in mm:	4,5	21	6,7	1,1

date: 07.08.2014