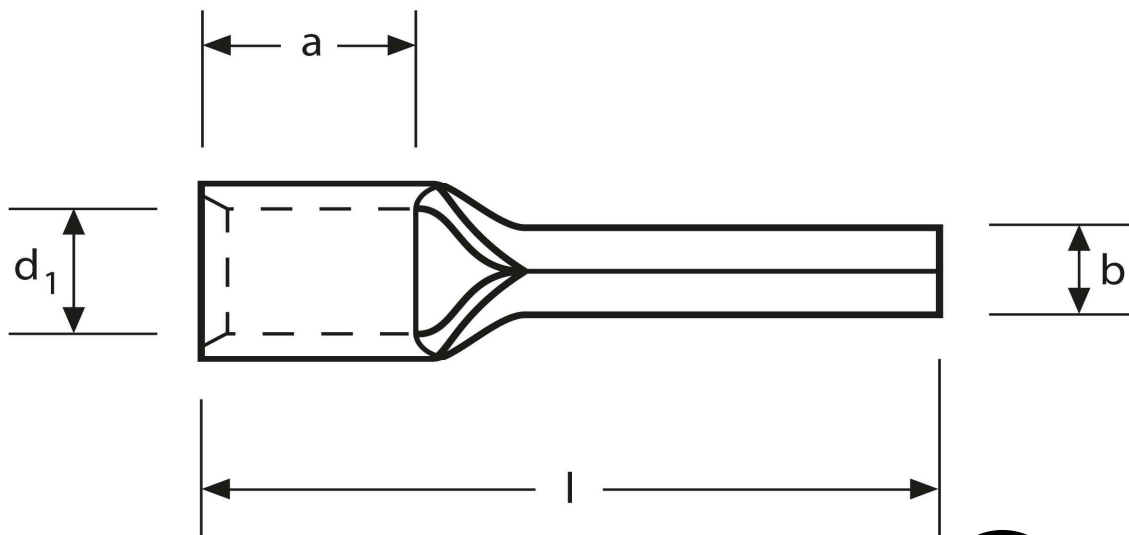
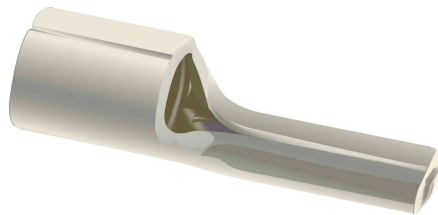


Quetschkabelschuhe

Stiftform

16 mm²



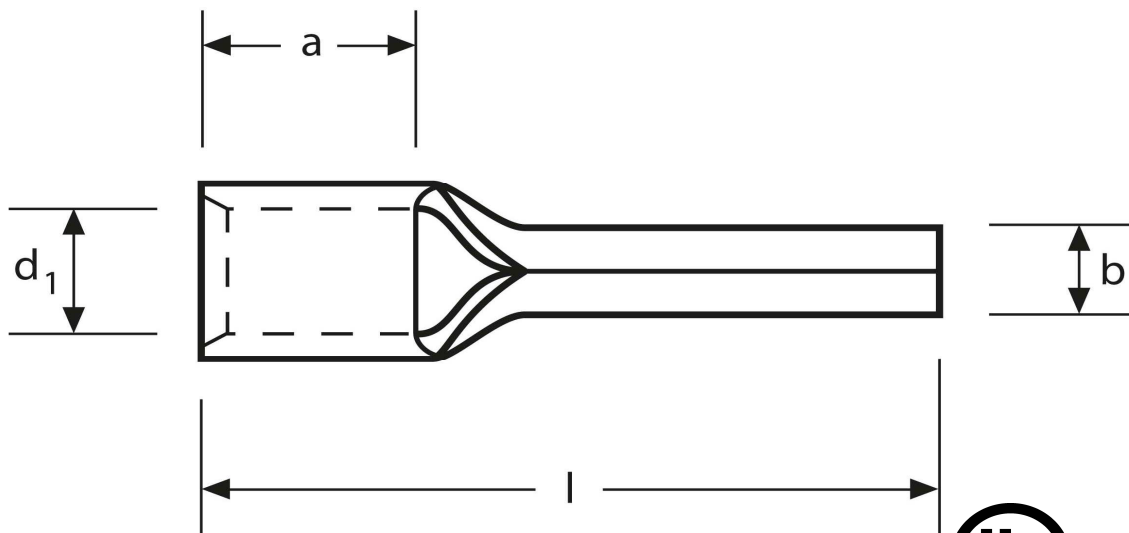
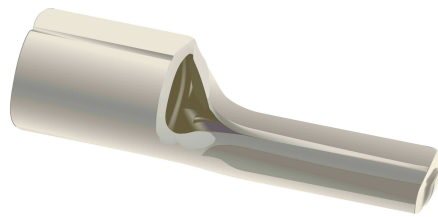
Art.Nr.	Werkstoff	Oberfläche		
K 331016	E-CU	galv. Sn	4,40 / 1000	500
	b	d₁	l	
in mm:	5,5	5,8	26,0	
	a	s		
in mm:	10,0	1,2		

Stand: 07.08.2014

Solderless terminals

pin-type

16 mm²



part no.	material	surface		
K 331016	E-CU	tin-plated	4,40 / 1000	500
	b	d₁	l	
in mm:	5,5	5,8	26,0	
	a	s		
in mm:	10,0	1,2		

date: 07.08.2014