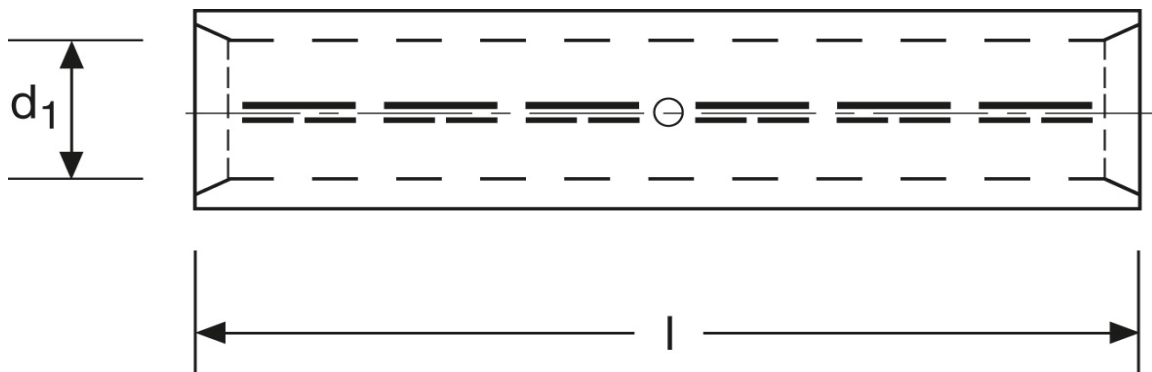


**Al - Pressverbinder**  
 rm/sm 120 mm<sup>2</sup> - se 150 mm<sup>2</sup>

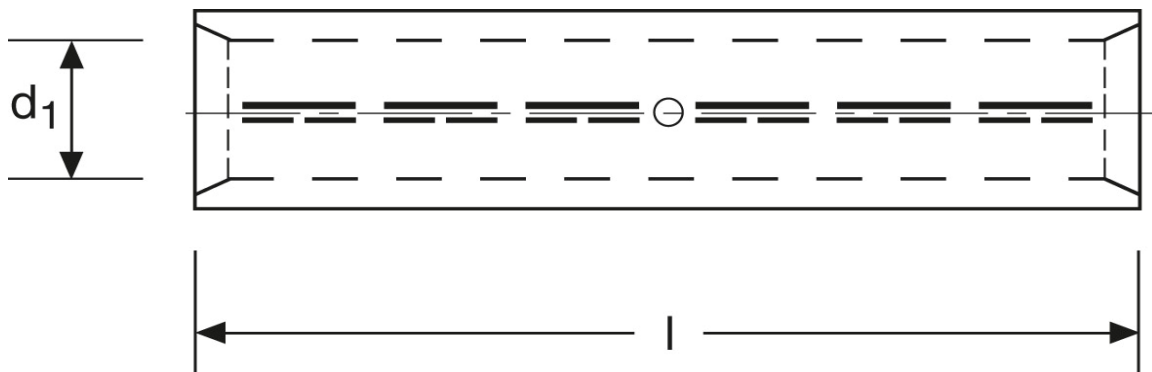


<b>Art.Nr.</b>	<b>Werkstoff</b>		
K3310120	E-Al 99,5	78,0/1000	10

	<b>d<sub>1</sub></b>	<b>l</b>
<b>in mm:</b>	14,7	105

Stand: 08.08.2014

**Al - compression joints**  
 rm/sm 120 mm<sup>2</sup> - se 150 mm<sup>2</sup>



part no.	material		
K3310120	E-Al 99,5	78,0/1000	10

	$d_1$	$l$
in mm:	14,7	105

date: 08.08.2014