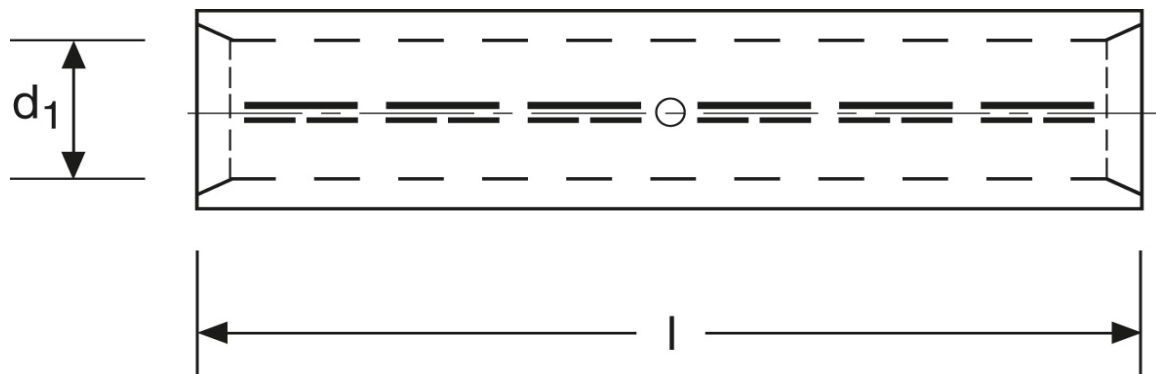


Al - Pressverbinder
 rm/sm 95 mm² - se 120 mm²

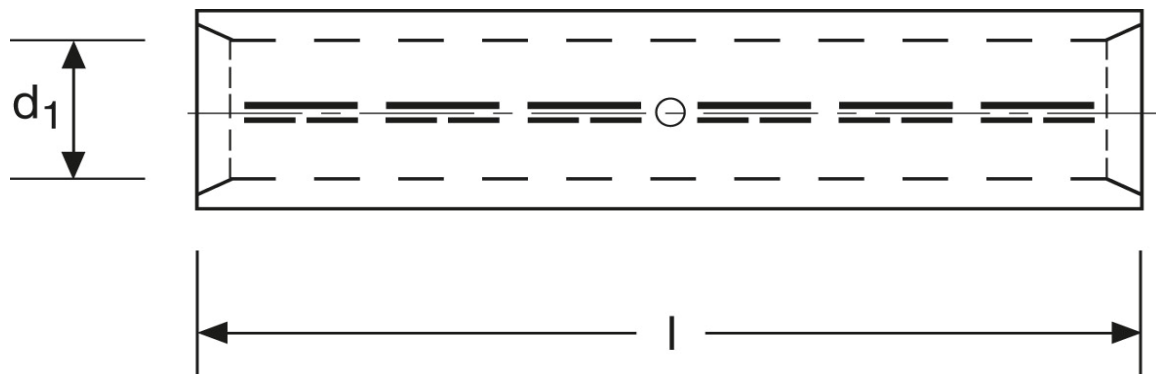


Art.Nr.	Werkstoff		
K3310095	E-Al 99,5	76,0/1000	10

	d ₁	l
in mm:	13,2	105

Stand: 08.08.2014

Al - compression joints
 rm/sm 95 mm² - se 120 mm²



part no.	material		
K3310095	E-Al 99,5	76,0/1000	10

	d_1	l
in mm:	13,2	105

date: 08.08.2014