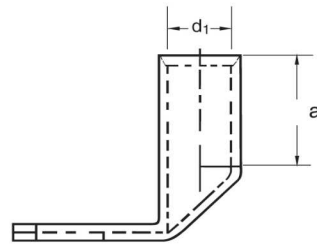
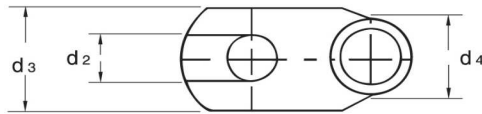
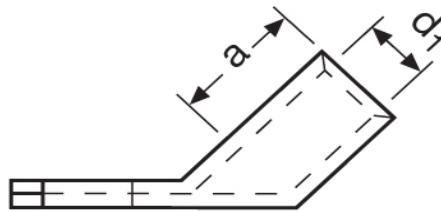


**Eisenacher**  
elektroTECHNIK GmbH

**Kabel-Anschluss- und Verbindungstechnik**

**Winkelpresskabelschuhe**  
185,00 mm<sup>2</sup>



Katalogseite: 2.20 - 2.21

Art.Nr.	Werkstoff	Oberfläche		
K3170121	E-CU	galv. Sn	191,00/1000	25
	d2	d3	a	
in mm:	13,0	37,0	40,0	
	d4	d1	Winkel	
	25,5	19,0	45°	