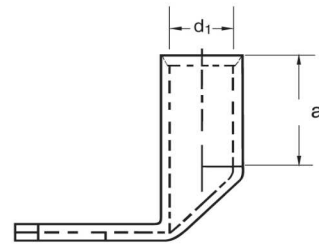
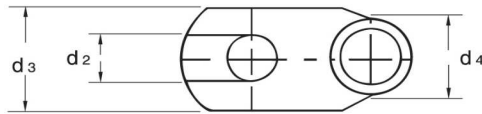
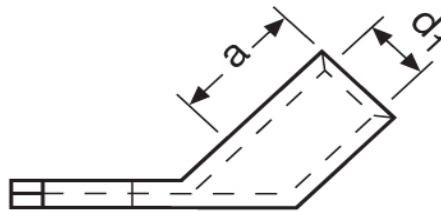




**Eisenacher**  
elektroTECHNIK GmbH

**Kabel-Anschluss- und Verbindungstechnik**

**Winkelpresskabelschuhe**  
95,00 mm<sup>2</sup>



Katalogseite: 2.20 - 2.21

Art.Nr.	Werkstoff	Oberfläche		
K3167121	E-CU	galv. Sn	92,70/1000	50
	d2	d3	a	
in mm:	13,0	28,0	35,0	
	d4	d1	Winkel	
	19,0	13,5	45°	