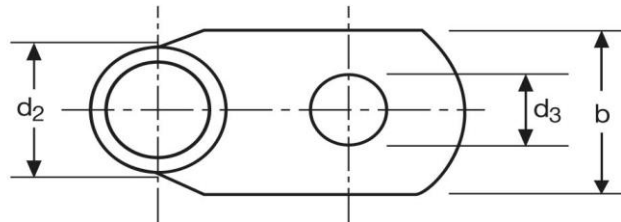
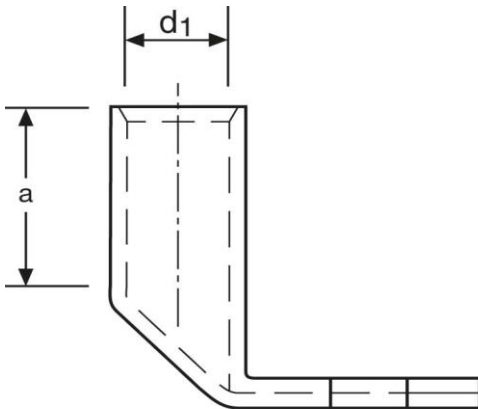


Winkelpresskabelschuhe

90° abgewinkelt
50 mm² M10

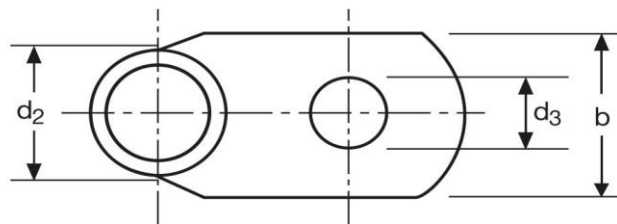
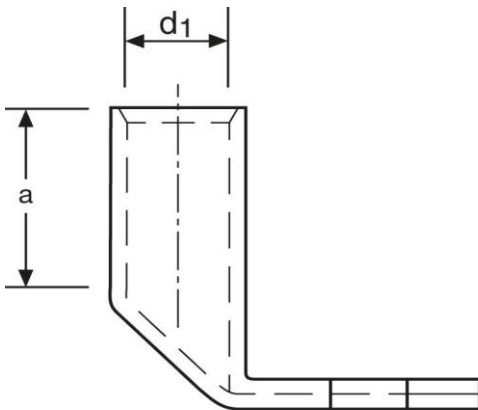


Art.Nr.	Werkstoff	Oberfläche		
K3165100	E-CU	galv. Sn	44,6/ 1000	25
	d₃	b	a	
in mm:	10,5	22	28	
	d₁	d₂		
in mm:	10,0	14,5		

Stand: 07.12.2016

Angled compression cable-lugs

90° angle
 50 mm² M10



part no.	material	surface		
K3165100	E-CU	tin-plated	44,6/ 1000	25
	d₃	b	a	
in mm:	10,5	22	28	
	d₁	d₂		
in mm:	10,0	14,5		

date: 07.06.2016