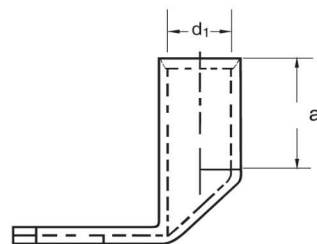
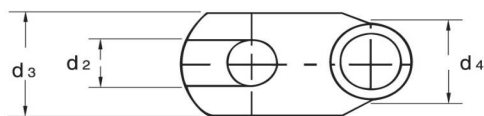
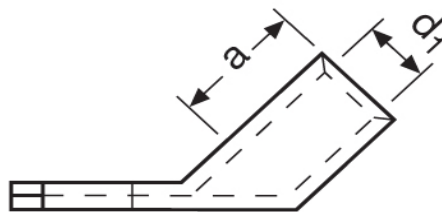


**Eisenacher**  
elektroTECHNIK GmbH

**Kabel-Anschluss- und Verbindungstechnik**

**Winkelpresskabelschuhe**  
50,00 mm<sup>2</sup>



Katalogseite: 2.20 - 2.21

Art.Nr.	Werkstoff	Oberfläche		
K31650800	E-CU	galv. Sn	46,10/1000	100
	d2	d3	a	
in mm:	8,4	20,0	28,0	
	d4	d1	Winkel	
	14,5	10,0	90°	