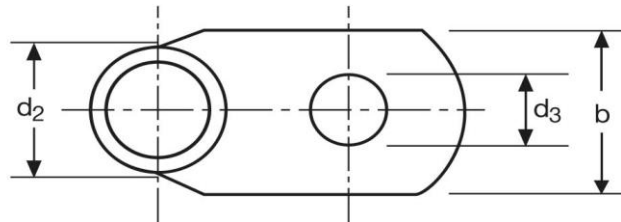
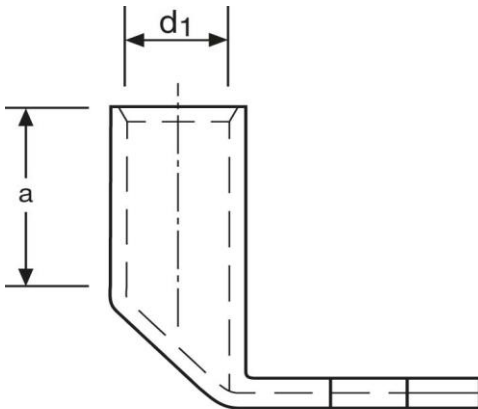


Winkelpresskabelschuhe

90° abgewinkelt
50 mm² M8

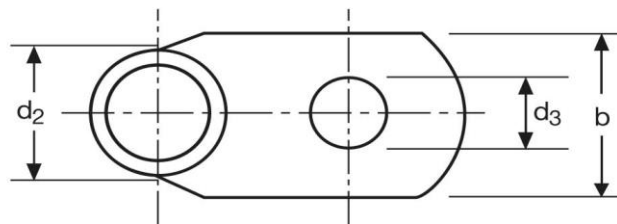
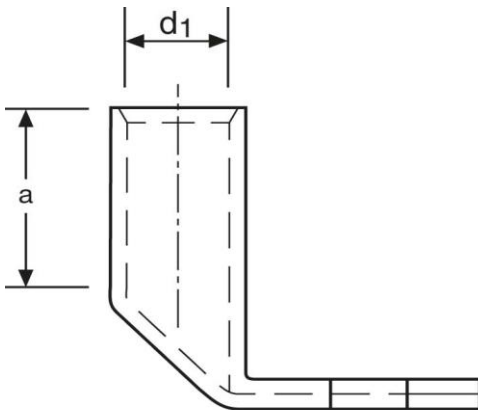


Art.Nr.	Werkstoff	Oberfläche		
K3165080	E-CU	galv. Sn	43,9/ 1000	25
	d₃	b	a	
in mm:	8,4	20	28	
	d₁	d₂		
in mm:	10,0	14,5		

Stand: 07.12.2016

Angled compression cable-lugs

90° angle
 50 mm² M8



part no.	material	surface		
K3165080	E-CU	tin-plated	43,9/ 1000	25
	d₃	b	a	
in mm:	8,4	20	28	
	d₁	d₂		
in mm:	10,0	14,5		

date: 07.06.2016