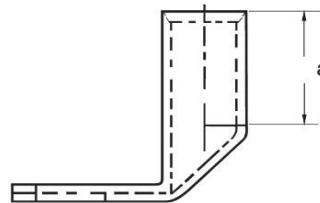
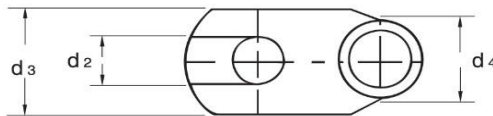
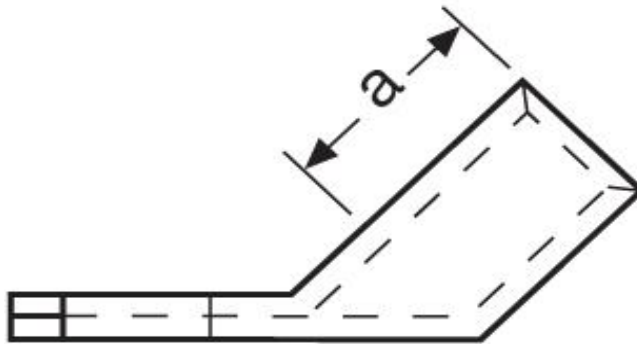
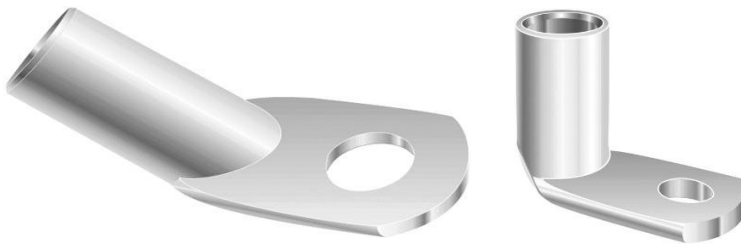
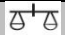



Winkelkabelschuhe

45° abgewinkelt

16 mm² M8



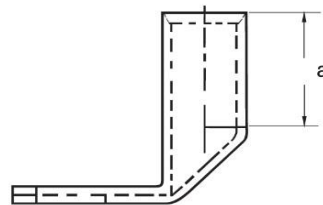
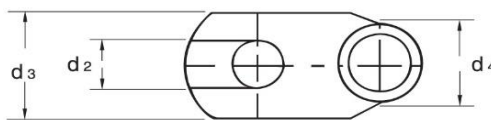
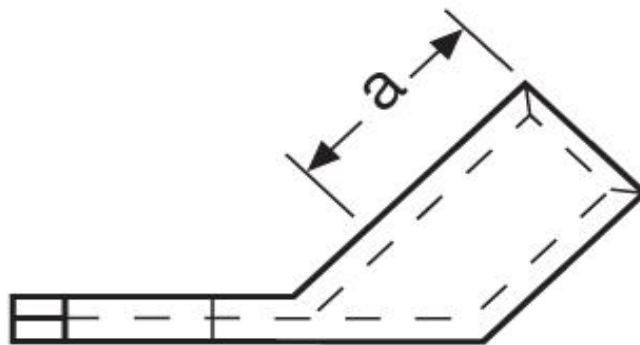
Art.Nr.	Werkstoff	Oberfläche		
K3162081	E-CU	galv. Sn	12,7/ 1000	50
	d₂	d₃	d₄	
in mm:	8,5	13	8,5	
	a			
in mm:	20,0			

Stand: 09.04.2020

Angled cable-lugs

45° angle

16 mm² M8



part no.	material	surface		
K3162081	E-CU	tin-plated	12,7/ 1000	50
	d₂	d₃	d₄	
in mm:	8,5	13,0	8,5	
	a			
in mm:	20,0			

date: 09.04.2020