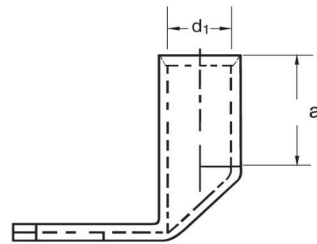
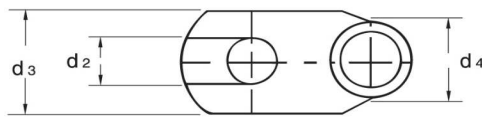
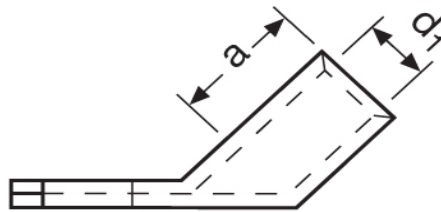


**Eisenacher**  
elektroTECHNIK GmbH

**Kabel-Anschluss- und Verbindungstechnik**

**Winkelpresskabelschuhe**  
16,00 mm<sup>2</sup>



Katalogseite: 2.20 - 2.21

Art.Nr.	Werkstoff	Oberfläche		
K31620600	E-CU	galv. Sn	12,50/1000	100
	d2	d3	a	
in mm:	6,4	13,0	20,0	
	d4	d1	Winkel	
	8,5	5,5	90°	