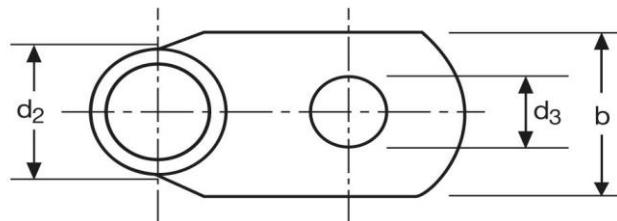
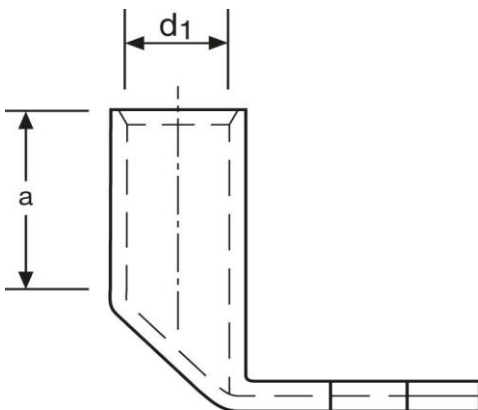


Winkelpresskabelschuhe

90° abgewinkelt

16 mm² M6



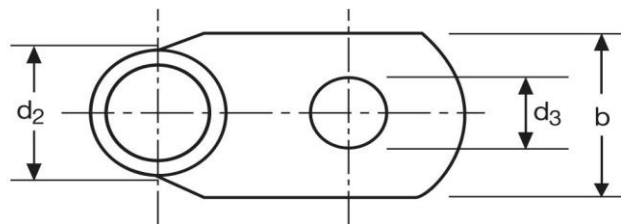
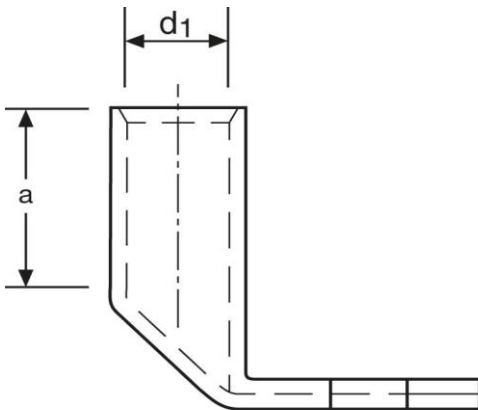
Art.Nr.	Werkstoff	Oberfläche		
K3162060	E-CU	galv. Sn	12,0/ 1000	50
	d₃	b	a	
in mm:	6,4	13	20	
	d₁	d₂		
in mm:	5,5	8,5		

Stand: 19.02.2015

Angled compression cable-lugs

90° angle

16 mm² M6



part no.	material	surface		
K3162060	E-CU	tin-plated	12,0/ 1000	50
	d₃	b	a	
in mm:	6,4	13	20	
	d₁	d₂		
in mm:	5,5	8,5		

date: 19.02.2015