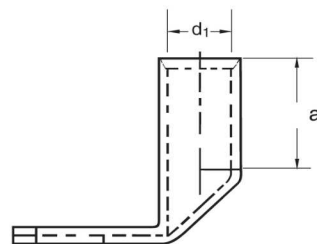
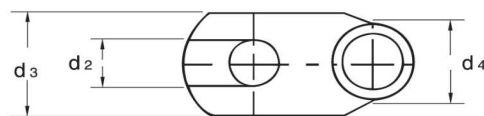
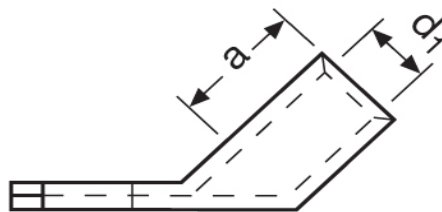




**Eisenacher**  
elektroTECHNIK GmbH

**Kabel-Anschluss- und Verbindungstechnik**

**Winkelpresskabelschuhe**  
10,00 mm<sup>2</sup>



Katalogseite: 2.20 - 2.21

Art.Nr.	Werkstoff	Oberfläche		
K31610500	E-CU	galv. Sn	3,60/1000	100
	d2	d3	a	
in mm:	5,3	9,0	10,0	
	d4	d1	Winkel	
	6,0	4,5	90°	