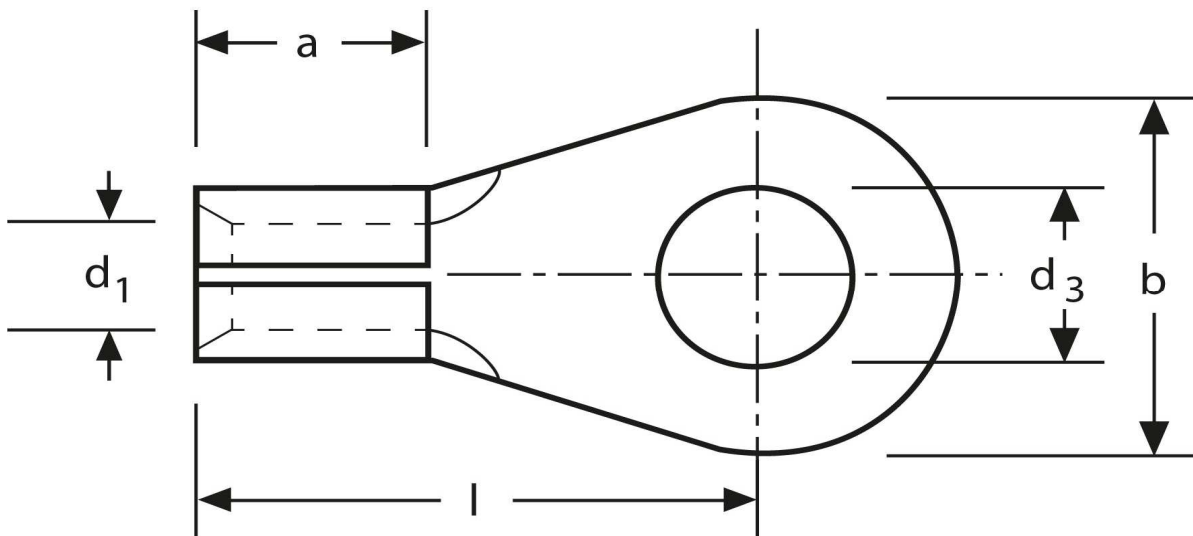


## Lötkaabelschuh

Ringform

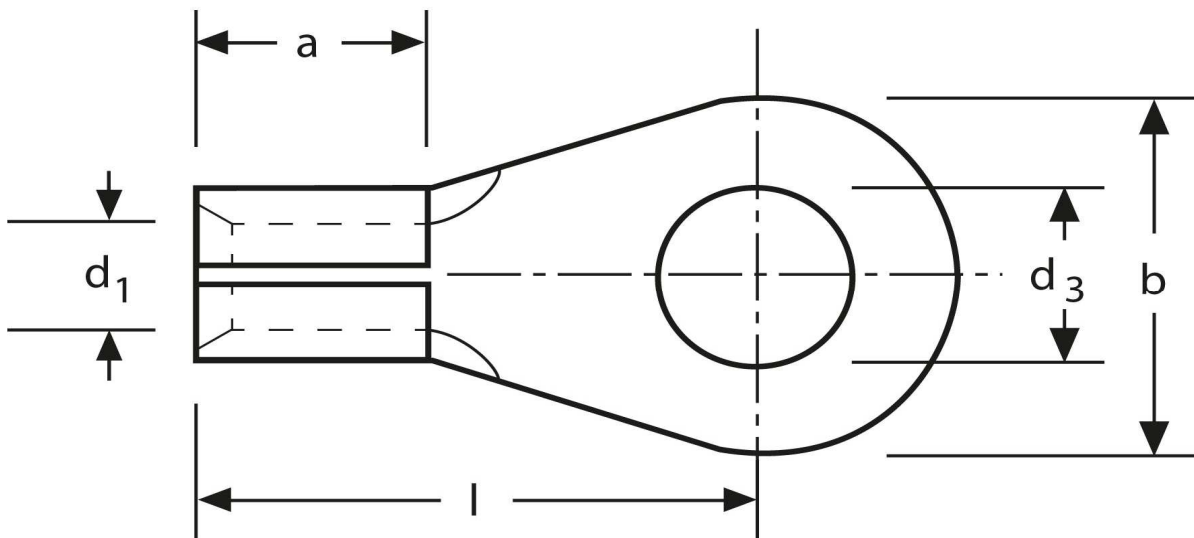
16 mm<sup>2</sup> M 6



<b>Artikel Nr.</b>	<b>Werkstoff</b>	<b>Oberfläche</b>		
K 3105060	Messing	galv. Sn	5,25 / 1000	500
	<b>d<sub>3</sub></b>	<b>d<sub>1</sub></b>	<b>b</b>	
<b>in mm:</b>	6,5	5,4	11	
	<b>l</b>	<b>a</b>	<b>Nenngröße</b>	
<b>in mm:</b>	24,0	11,5	6 - 5,4	

Stand: 15.07.2014

**Solder tags**  
ring type  
16 mm<sup>2</sup> M 6



part no.	material	surface		
K 3105060	brass	tin-plated	5,25 / 1000	500
	<b>d<sub>3</sub></b>	<b>d<sub>1</sub></b>	<b>b</b>	
<b>in mm:</b>	6,5	5,4	11	
	<b>l</b>	<b>a</b>	<b>nominal size</b>	
<b>in mm:</b>	24,0	11,5	6 - 5,4	

date: 15.07.2014