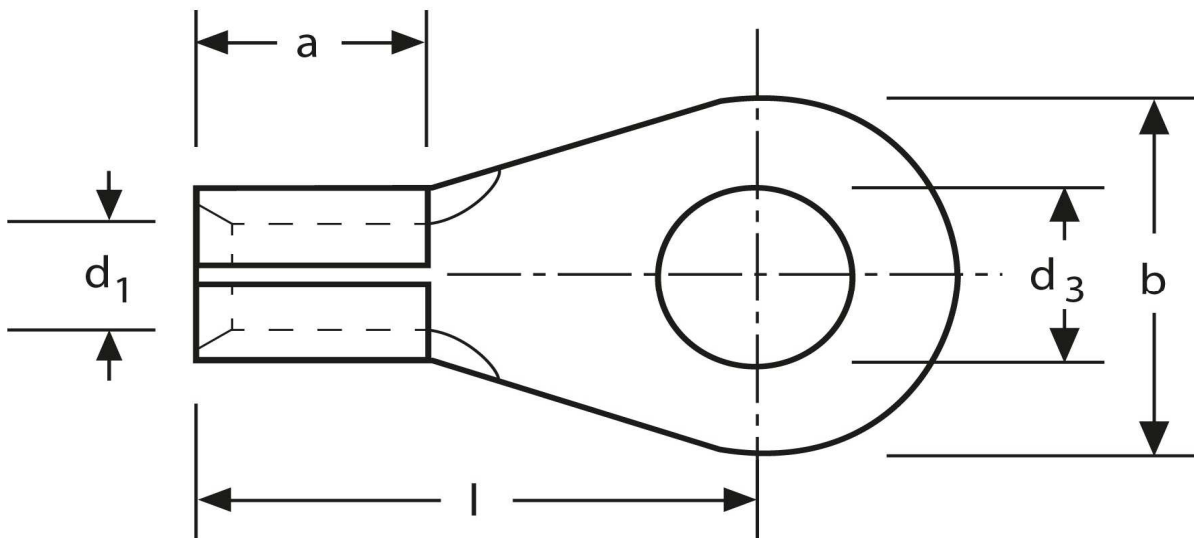


Lötkaabelschuh

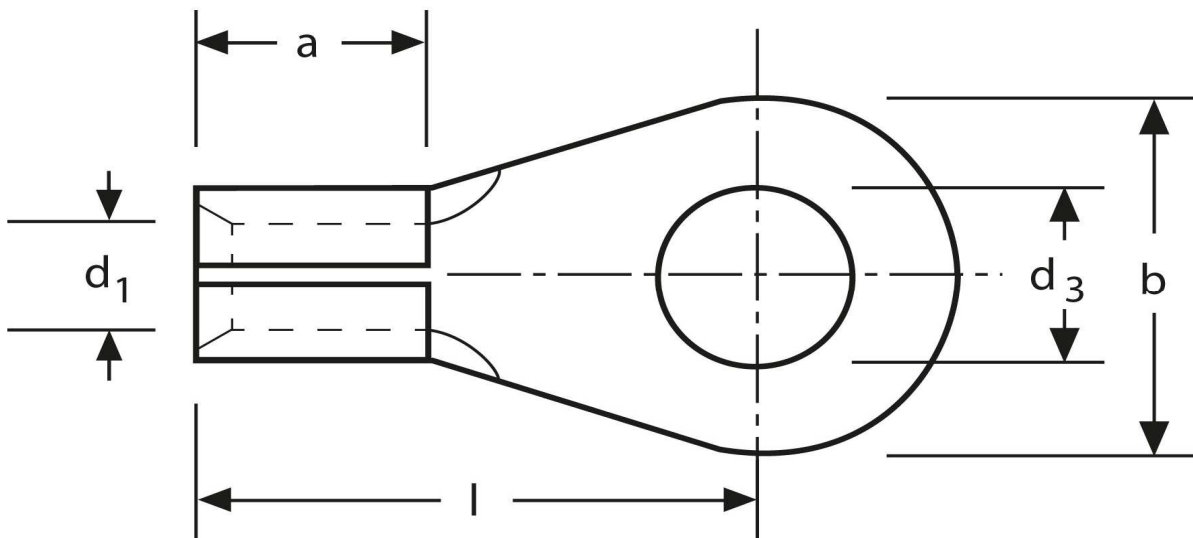
Ringform
 6 mm² M 10



Artikel Nr.	Werkstoff	Oberfläche		
K 3103080	Messing	galv. Sn	3,28 / 1000	600
	d₃	d₁	b	
in mm:	10,5	3,4	19	
	l	a	Nenngröße	
in mm:	24,0	8,0	10 - 3,4	

Stand: 14.07.2014

Solder tags
 ring type
 6 mm² M 10



part no.	material	surface		
K 3103080	brass	tin-plated	3,28 / 1000	600
	d₃	d₁	b	
in mm:	10,5	3,4	19	
	l	a	nominal size	
in mm:	24,0	8,0	10 - 3,4	

date: 14.07.2014