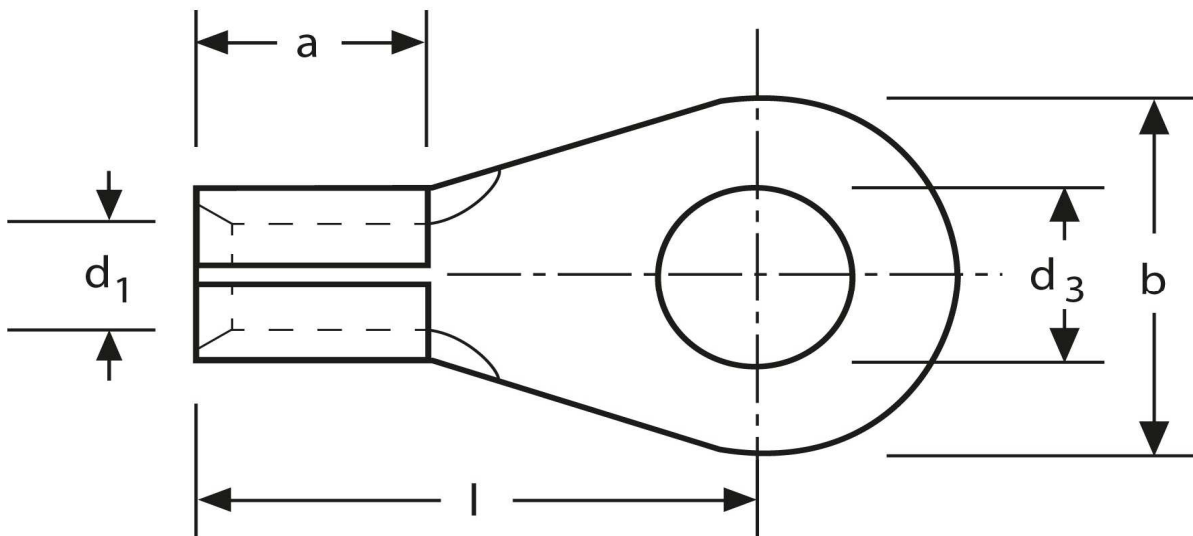


Lötkaabelschuh

Ringform

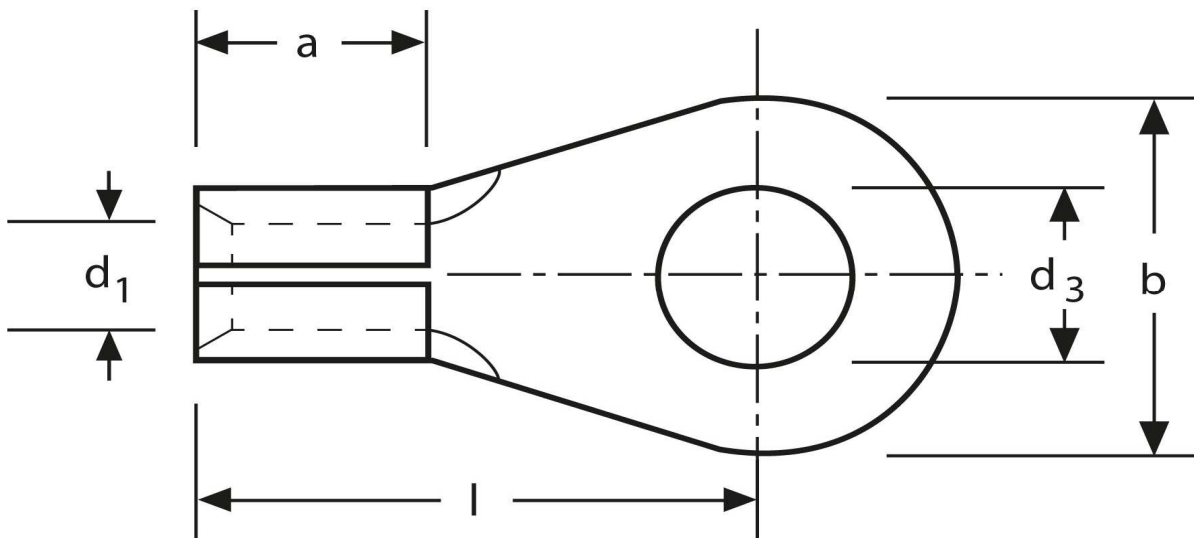
2,5 mm² M 6



Artikel Nr.	Werkstoff	Oberfläche		
K 3102060	Messing	galv. Sn	1,10 / 1000	1.000
	d₃	d₁	b	
in mm:	6,5	2,3	11	
	l	a	Nenngröße	
in mm:	17,0	6,0	6 - 2,3	

Stand: 14.07.2014

Solder tags
ring type
2,5 mm² M 6



part no.	material	surface		
K 3102060	brass	tin-plated	1,10 / 1000	1.000
	d₃	d₁	b	
in mm:	6,5	2,3	11	
	l	a	nominal size	
in mm:	17,0	6,0	6 - 2,3	

date: 14.07.2014