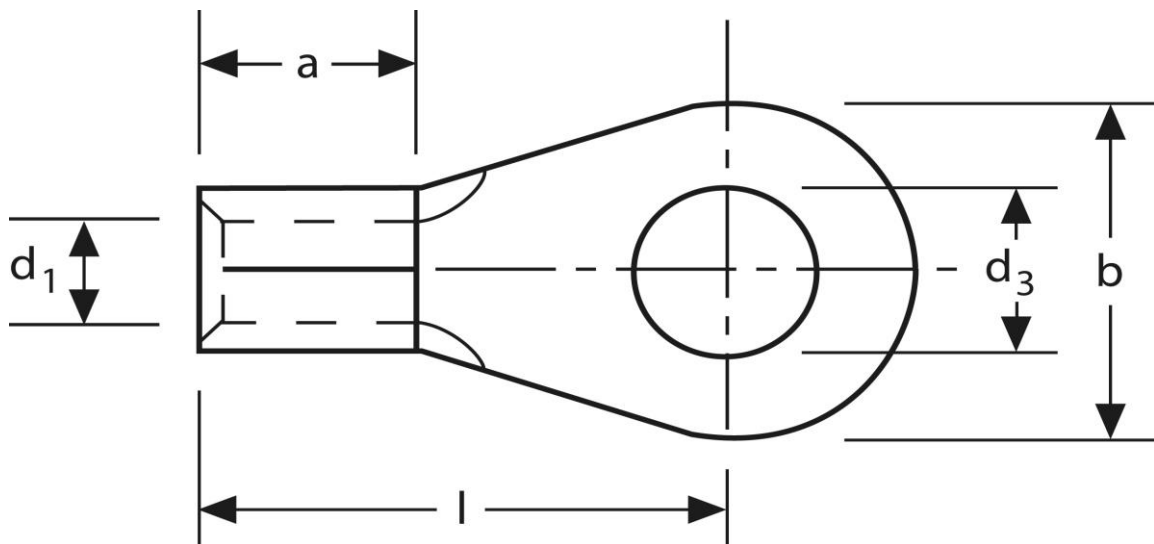


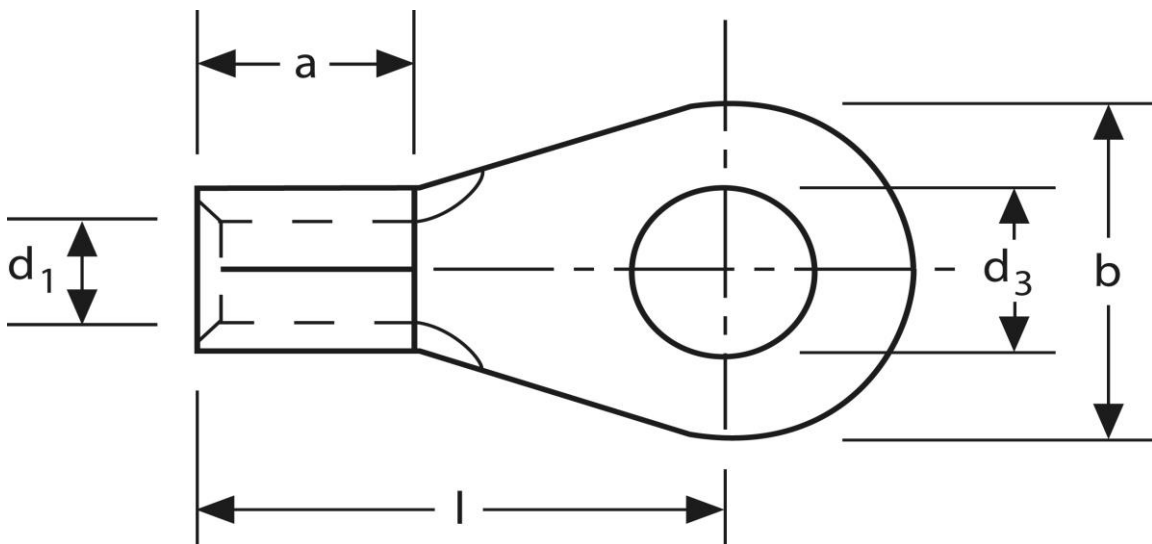
Quetschkabelschuhe
Ringform - Sonderausführung
50 mm² M 8



Art.Nr.	Werkstoff	Oberfläche		
K 308080.9	E-CU	galv. Sn	16,50 / 1000	100
	d ₃	d ₁	b	
in mm:	8,4	9,5	17	
	l	a	s	
in mm:	36	19,0	1,8	

Stand: 25.01.2019

Solderless terminals
 ring-type
 50 mm² M 8



part no.	material	surface		
K 308080.9	E-CU	tin-plated	16,50 / 1000	100
	d₃	d₁	b	
in mm:	8,4	9,5	17	
	l	a	s	
in mm:	36	19,0	1,8	

date: 25.01.2019