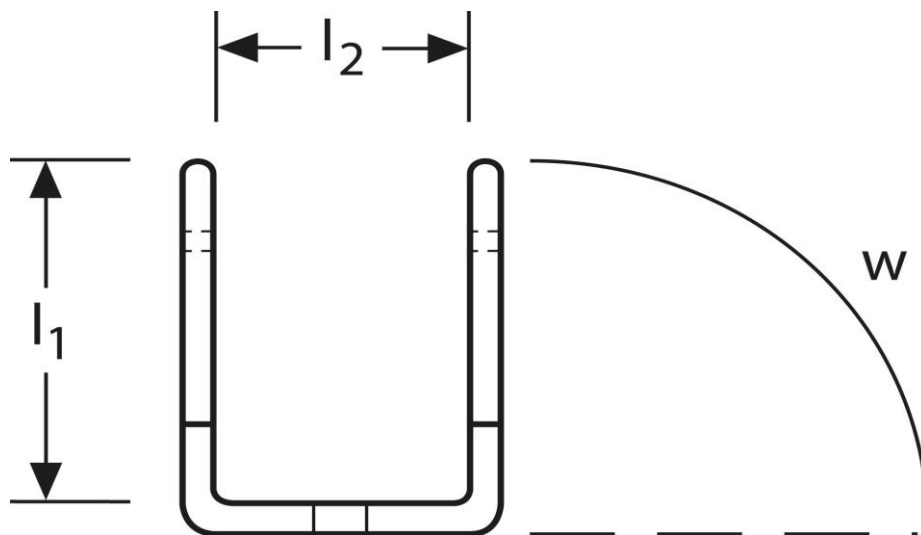
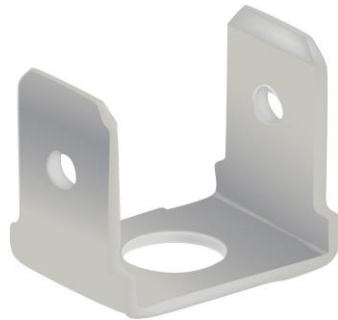


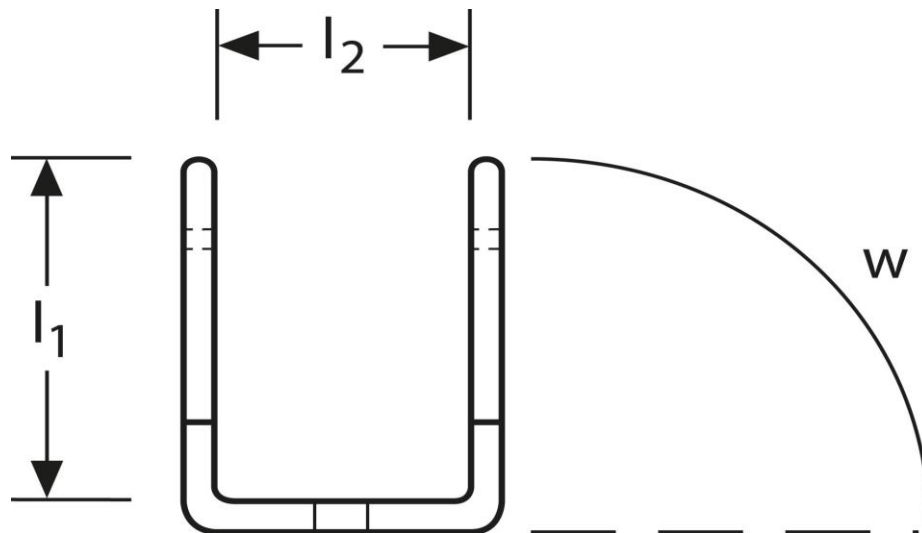
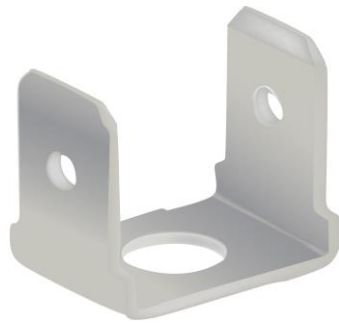
Geräte-Flachstecker
2-fach
abgewinkelt 90°



Art.Nr.	Werkstoff	Oberfläche		
F51136830912	Messing	galv. Sn	1,60/1000	1.000
	l_1	l_2		
in mm:	10,0	10,0		
	Steckgröße	M Ø	w	
in mm:	6,3 - 0,8	3,2	90°	

Stand: 07.10.2014

Male terminals
double
angled 90°



part no.	material	surface		
F51136830912	brass	tin-plated	1,60/1000	1.000
	l_1	l_2		
in mm:	10,0	10,0		
	tab-size	M Ø	w	
in mm:	6,3 - 0,8	3,2	90°	

date: 07.10.2014