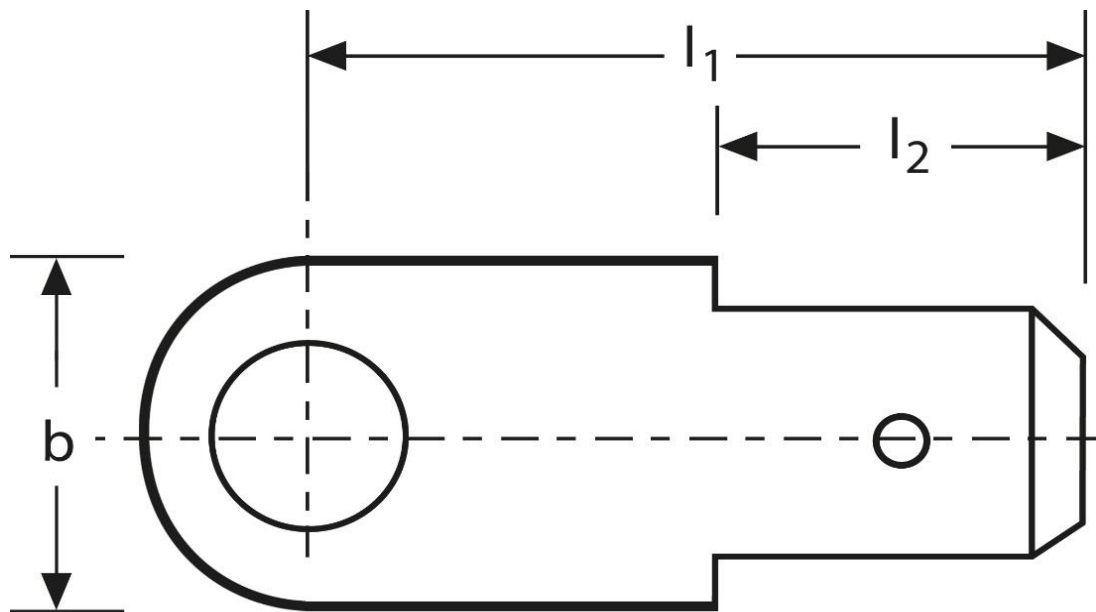



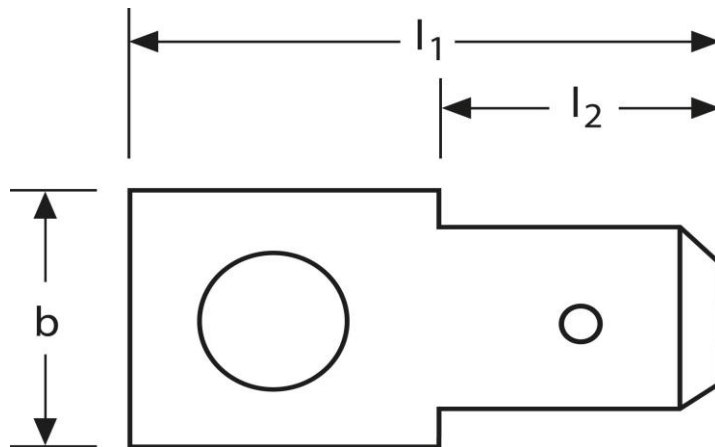
Geräte-Flachstecker
Form A
gerade, mit abgerundeten Ecken




Art.Nr.	Werkstoff	Oberfläche	
F51109150011	Messing	blank	1.000
	l_1	l_2	b
in mm:	20,5	12,5	12,0
	Steckgröße	Bohrung	w
in mm:	9,5 - 1,2	5,0	0°

Stand: 09.02.2018

Male terminals
form A
straight, with rounded corners



part no.	material	surface	
F51109150011	brass	bare	1.000
	l₁	l₂	b
in mm:	20,5	12,5	12,0
	tab-size	borehole	w
in mm:	9,5 - 1,2	5,0	0°

date: 09.02.2018