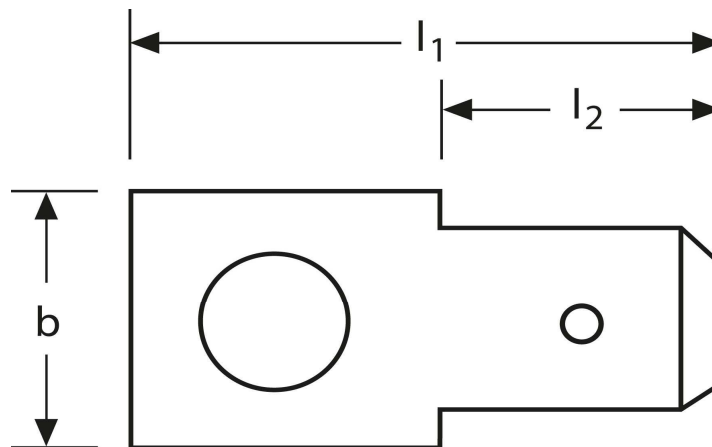
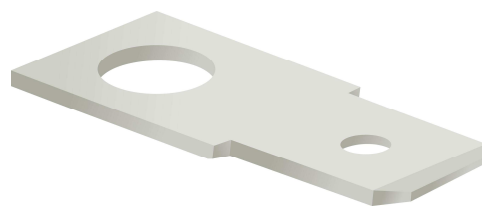
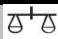



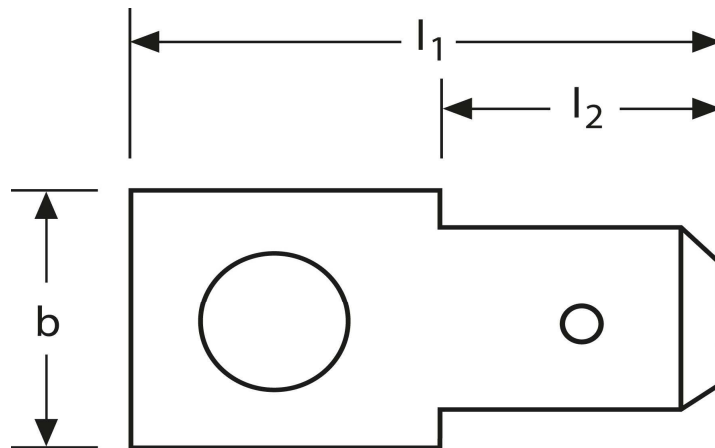
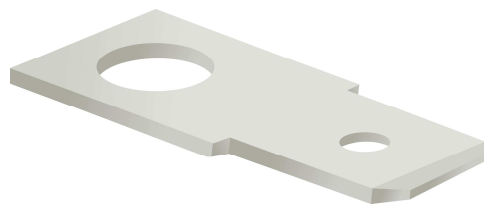
Geräte-Flachstecker
 Form A
 gerade

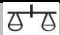



Art.Nr.	Werkstoff	Oberfläche		
F 51106840012	Messing	galv. Sn	0,78/1000	1.000
	l₁	l₂	b	
in mm:	19,0	8,0	8,0	
	Steckgröße	M Ø	w	
in mm:	6,3 - 0,8	4	0°	

Stand: 22.09.2014

Male terminals
 form A
 straight



part no.	material	surface		
F 51106840012	brass	tin-plated	0,78/1000	1.000
	l₁	l₂	b	
in mm:	19,0	8,0	8,0	
	tab-size	M Ø	w	
in mm:	6,3 - 0,8	4	0°	

date: 22.09.2014