

## Flachsteckverteiler Typ F

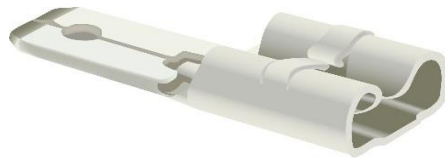
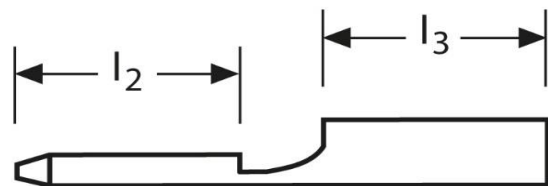
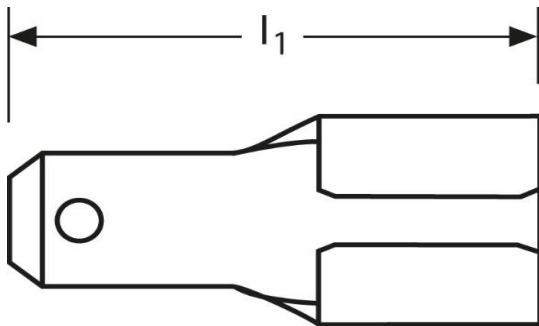


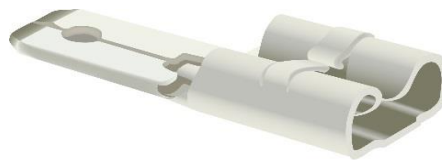
Abbildung zeigt eine verzinnte Ausführung



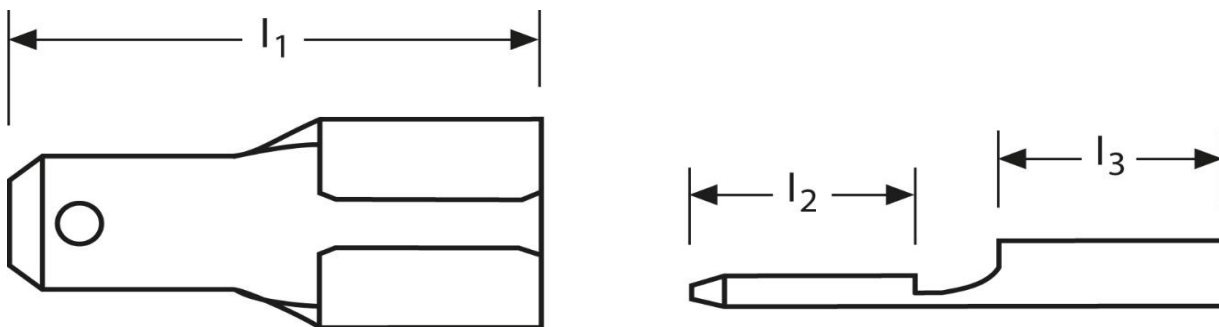
Art.Nr.	Werkstoff	Oberfläche	$\overline{\Delta}^{\pm\Delta}$	
F510634611	Messing	blank	0,70/1000	1.000
	$l_1$	$l_2$	$l_3$	
in mm:	18,0	8,0	7,5	
	<b>Steckgröße</b>			
in mm:	Stecker: 4,8 x 0,8		Hülse: 6,3 x 0,8	

Stand: 01.03.2019

## Multiple tabs type F



picture shows a tin-plated type



<b>part no.</b>	<b>material</b>	<b>surface</b>		
F510634611	brass	bare	0,70/1000	1.000
	$l_1$	$l_2$	$l_3$	
<b>in mm:</b>	18,0	8,0	7,5	
	<b>tab-size</b>			
<b>in mm:</b>	male: 4,8 x 0,8		female: 6,3 x 0,8	

date: 01.03.2019