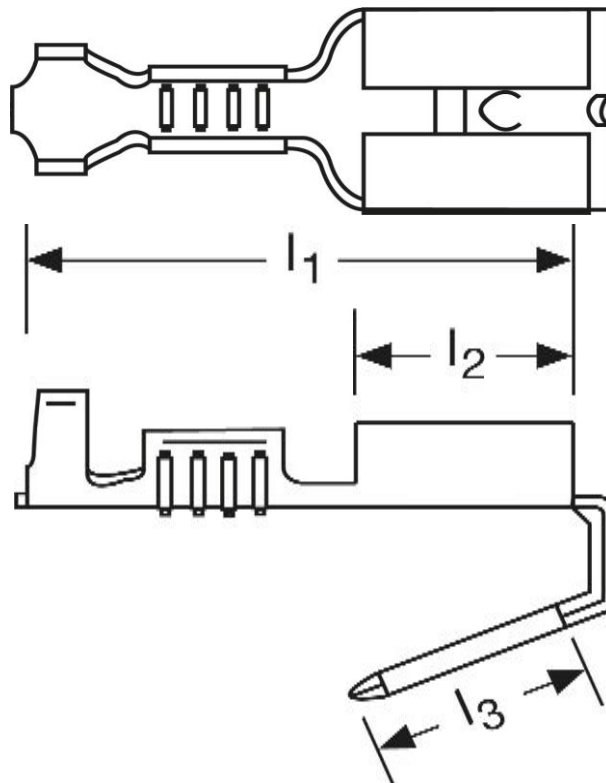


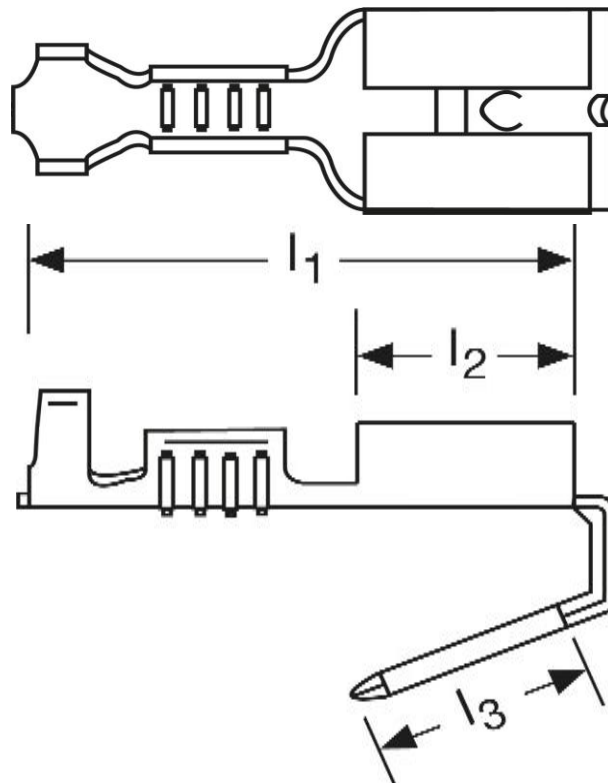
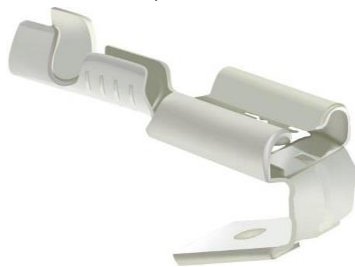
## Flachsteckhülsen mit Abzweig 2,5 mm<sup>2</sup>



Art.Nr.	Werkstoff	Oberfläche	$\frac{\sigma}{\sigma_{\text{Zug}}}$	
F506630244	Stahl	vernickelt	1,14/1000	500
	$l_1$	$l_2$	$l_3$	Steckgröße
in mm:	19,0	7,7	8,0	6,3 - 0,8

Stand: 25.02.2019

**Female disconnects**  
 piggy back  
 2,5 mm<sup>2</sup>



part no.	material	surface		
F506630244	steel	nickel	1,14/1000	500
	$l_1$	$l_2$	$l_3$	tab-size
in mm:	19,0	7,7	8,0	6,3 - 0,8

date: 25.02.2019