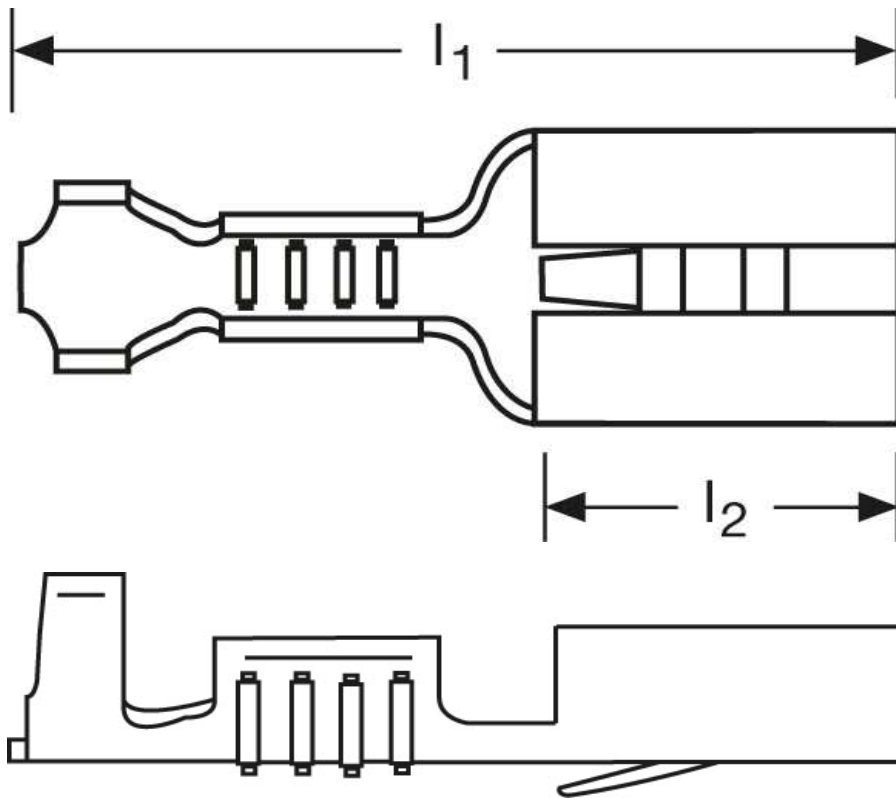
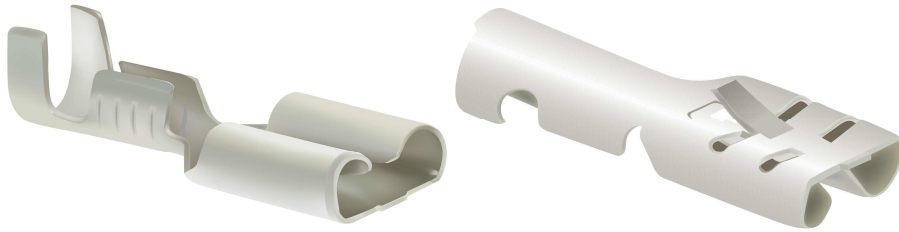


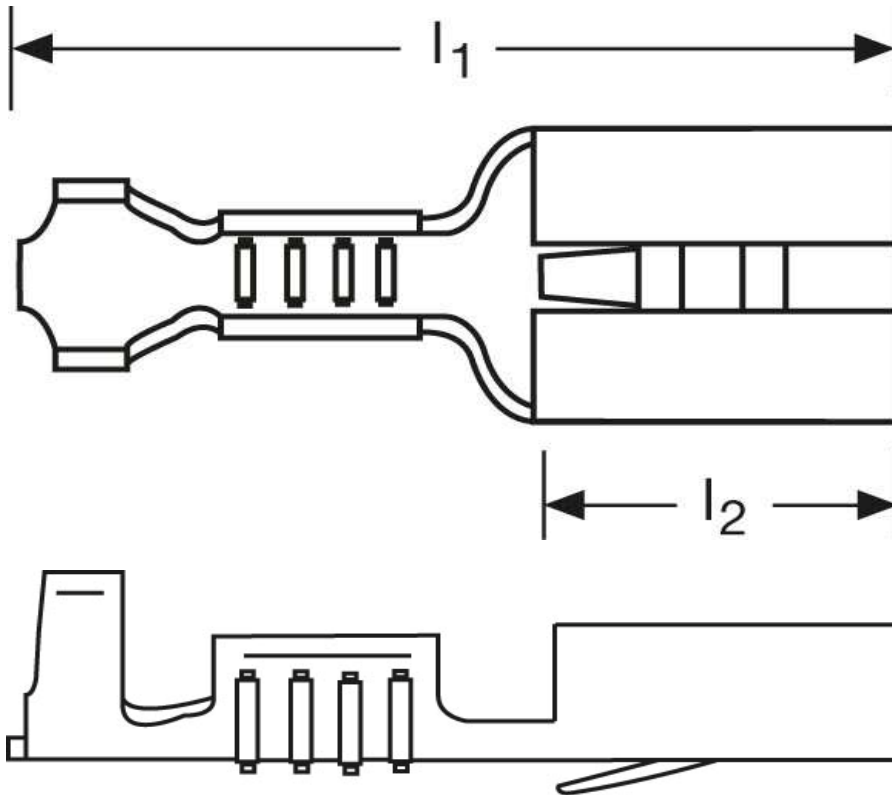
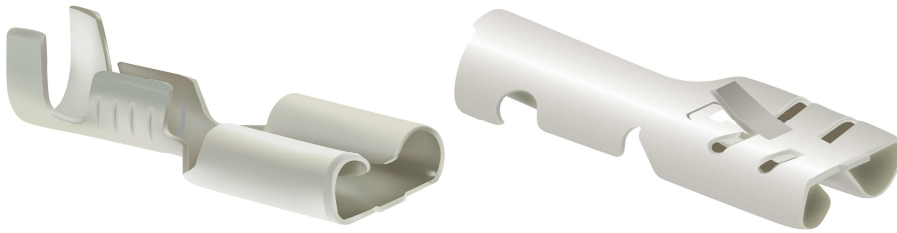
Flachsteckhülsen mit Rastzunge 6 mm²





Art.Nr.	Werkstoff	Oberfläche	$\frac{\sigma}{\sigma_{\text{Nenn}}}$	
F504630112	Messing	verzinkt	0,90/1000	1.000
	l_1	l_2	Steckgröße	
in mm:	19,2	7,4	6,3 - 0,8	

Stand: 12.09.2014

Female disconnects
 with retaining snap
 6 mm²



part no.	material	surface		
F504630112	brass	tin-plated	0,90/1000	1.000
	l_1	l_2	tab-size	
in mm:	19,2	7,4	6,3 - 0,8	

date: 12.09.2014