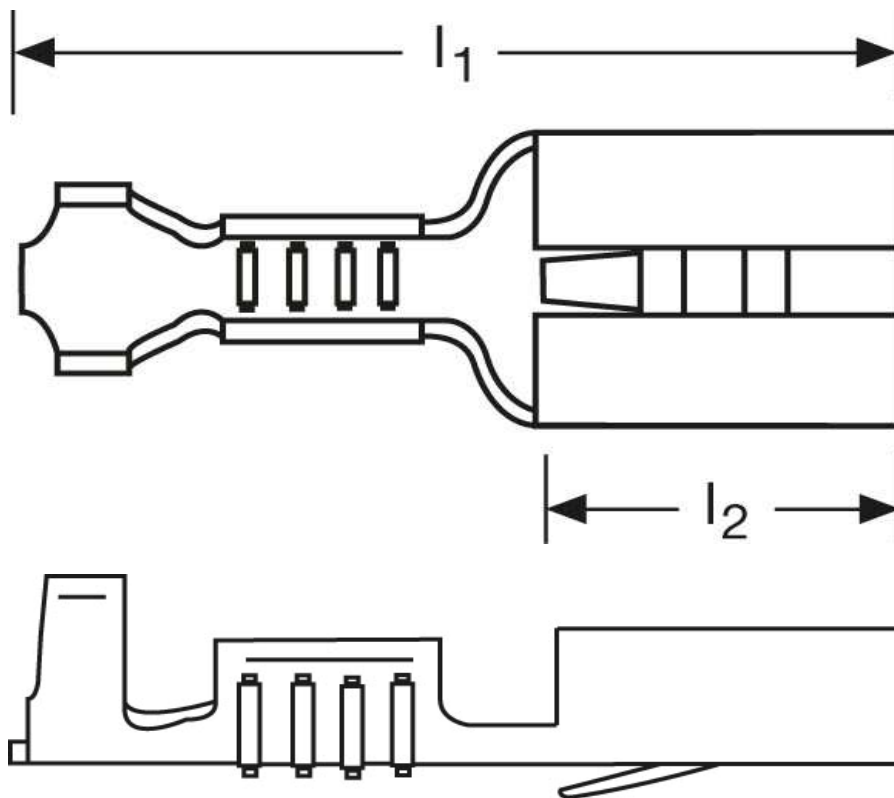
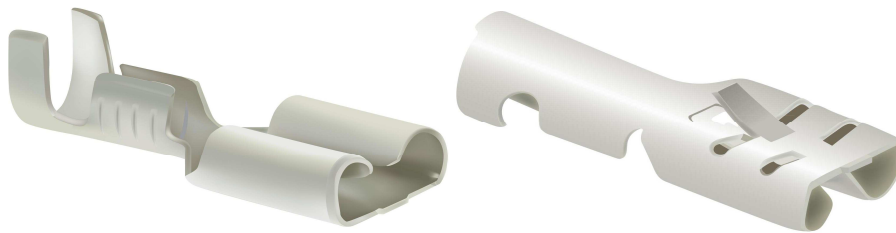


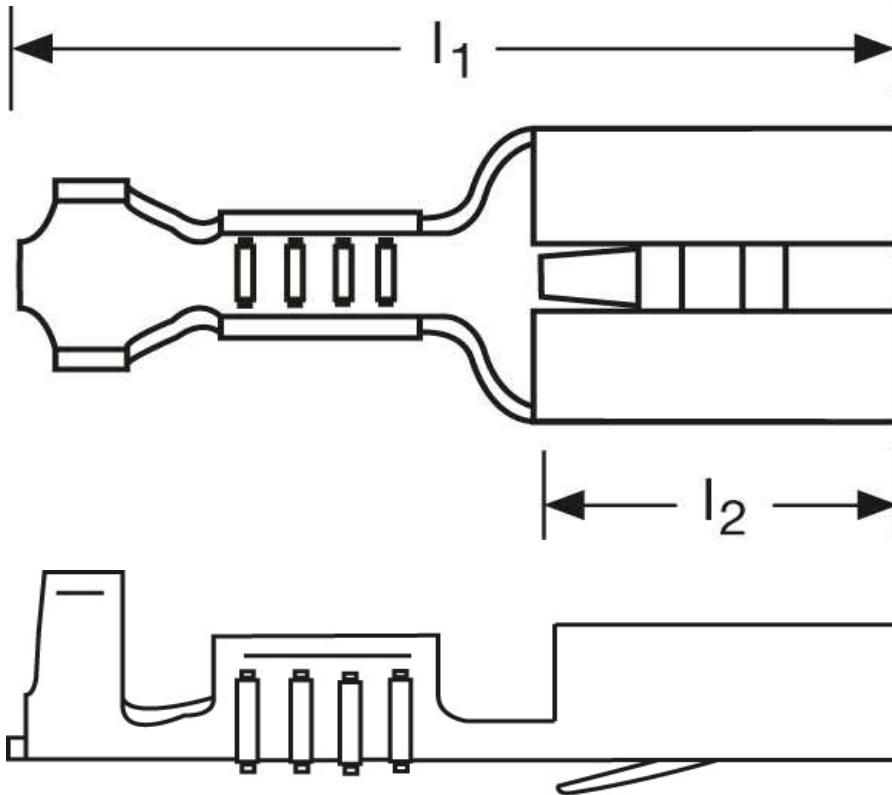
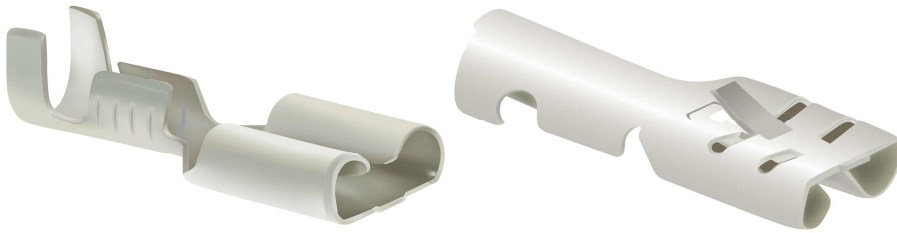
## Flachsteckhülsen mit Rastzunge 2,5 mm<sup>2</sup>





Art.Nr.	Werkstoff	Oberfläche	$\frac{\sigma}{\sigma_0}$	
F503630112	Messing	galv. Sn	0,85/1000	1.000
	$l_1$	$l_2$	Steckgröße	
in mm:	20	7,6	6,3 - 0,8	

Stand: 12.09.2014

**Female disconnects**  
 with retaining snap  
 2,5 mm<sup>2</sup>



part no.	material	surface		
F503630112	brass	tin-plated	0,85/1000	1.000
	$l_1$	$l_2$	tab-size	
in mm:	20	7,6	6,3 - 0,8	

date: 12.09.2014