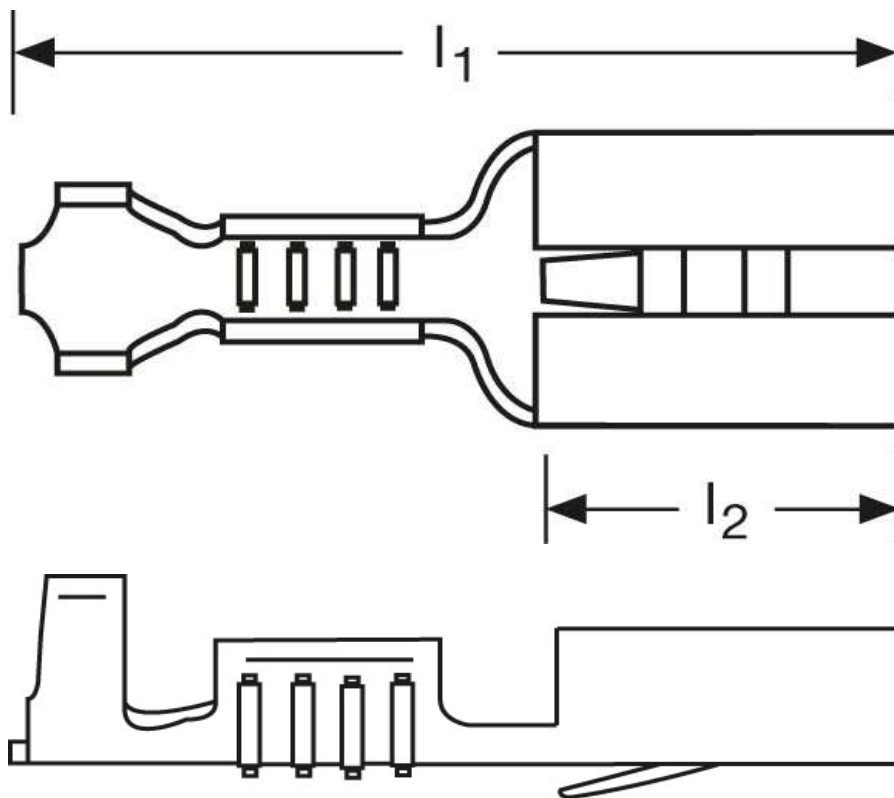
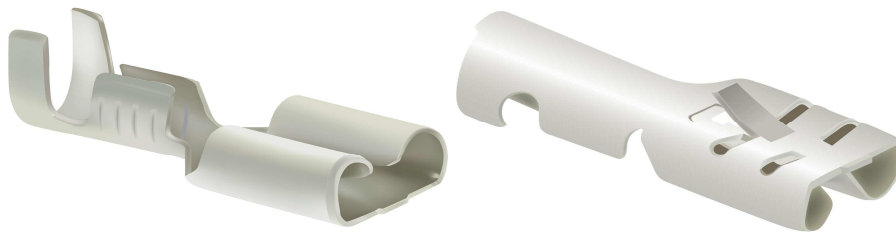


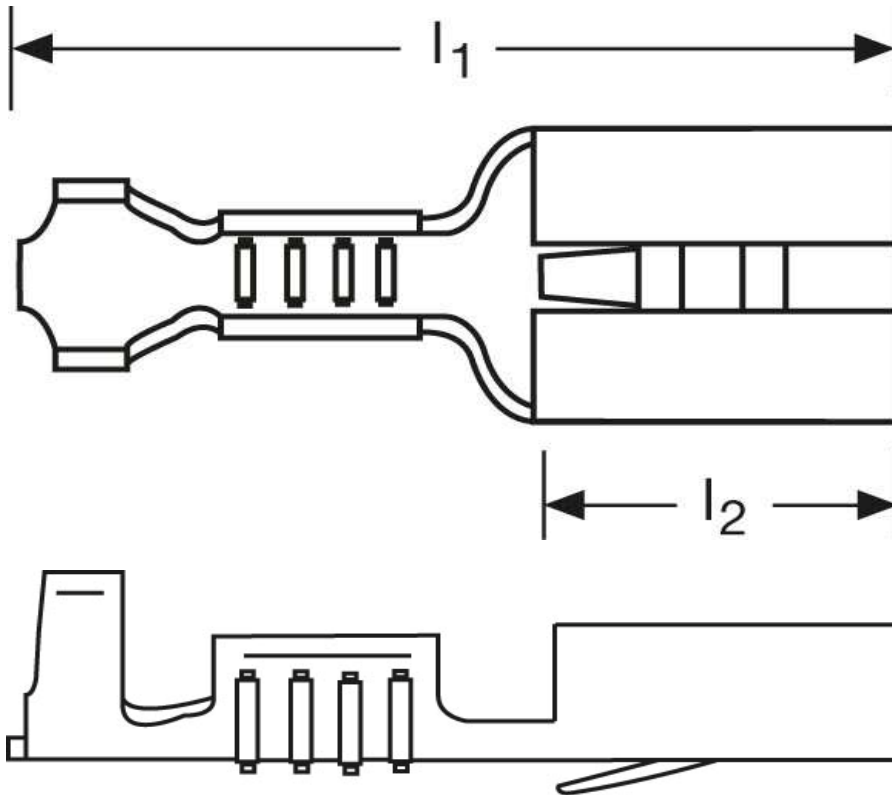
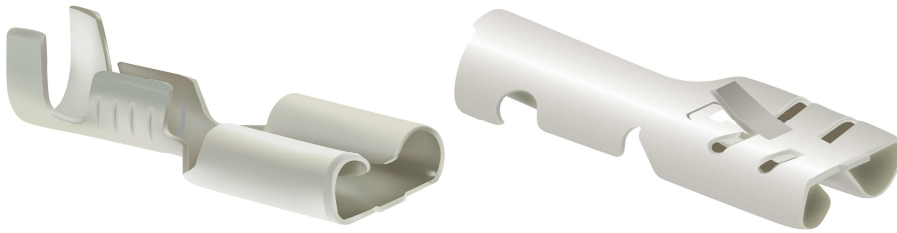
## Flachsteckhülsen mit Rastzunge 2,5 mm<sup>2</sup>



Art.Nr.	Werkstoff	Oberfläche		
F503481111	Messing	blank	0,54/1000	1.000
	$l_1$	$l_2$	Steckgröße	
in mm:	15,6	6	4,8 - 0,8	

Stand: 12.09.2014

**Female disconnects**  
 with retaining snap  
 2,5 mm<sup>2</sup>



part no.	material	surface		
F503481111	brass	bare	0,54/1000	1.000
	$l_1$	$l_2$	tab-size	
in mm:	15,6	6	4,8 - 0,8	

date: 12.09.2014