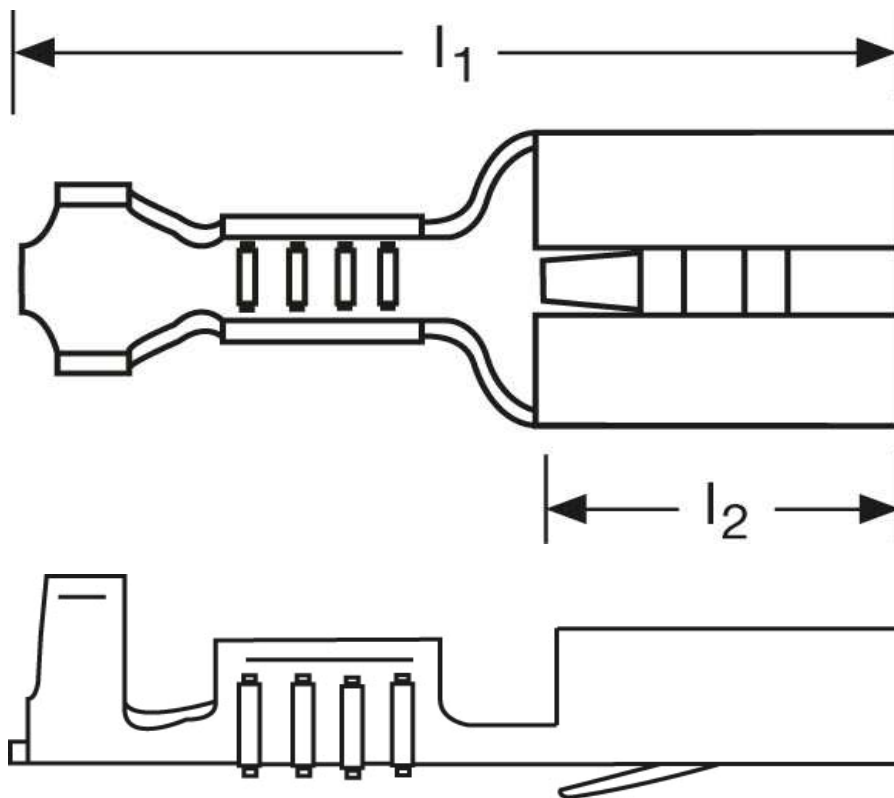
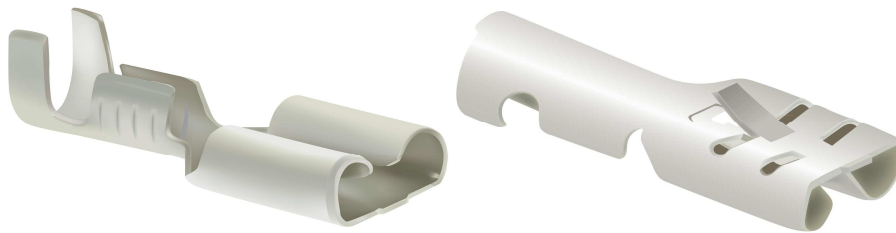


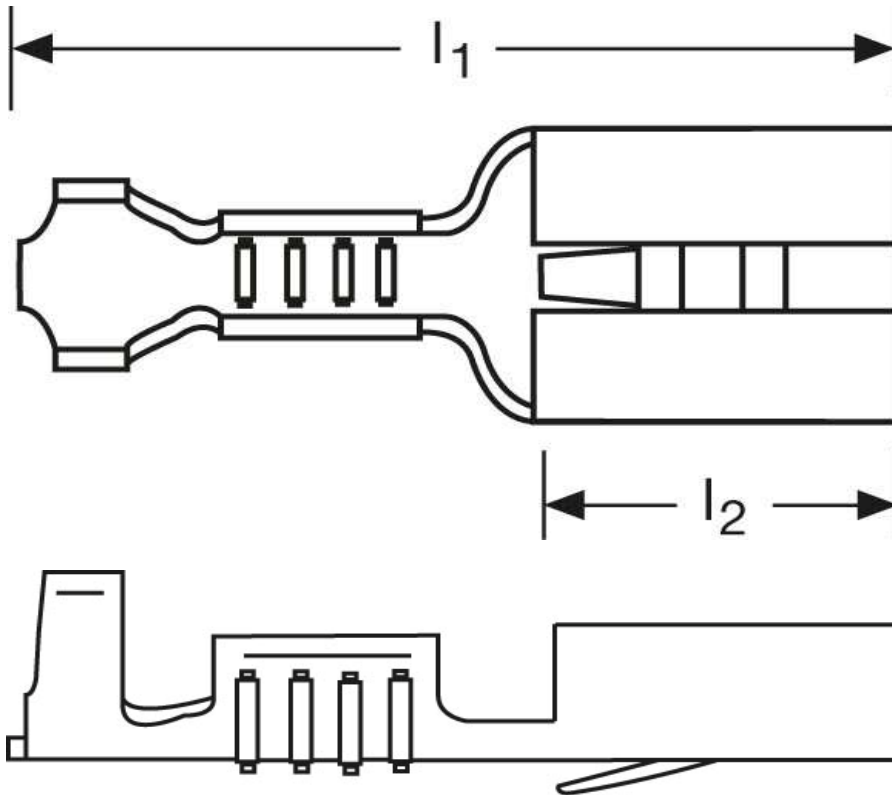
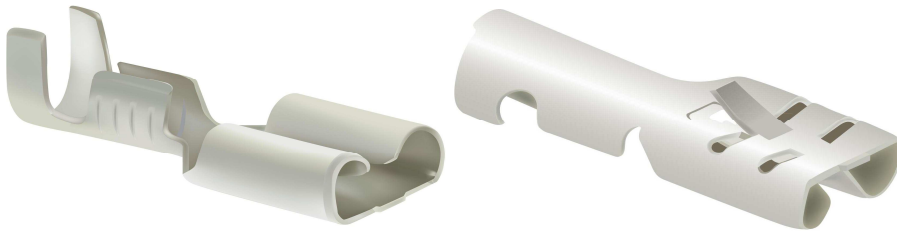
Flachsteckhülsen mit Rastzunge 1 mm²



Art.Nr.	Werkstoff	Oberfläche	$\frac{\sigma}{\sigma_{\text{Zug}}}$	
F502630112	Messing	galv. Sn	0,80/1000	1.000
	l_1	l_2	Steckgröße	
in mm:	20	7,6	6,3 - 0,8	

Stand: 12.09.2014

Female disconnects
 with retaining snap
 1 mm²



part no.	material	surface		
F502630112	brass	tin-plated	0,80/1000	1.000
	l_1	l_2	tab-size	
in mm:	20	7,6	6,3 - 0,8	

date: 12.09.2014