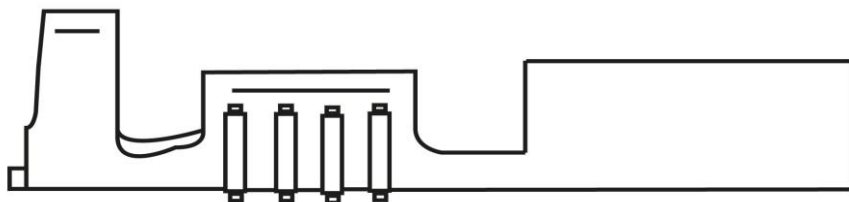
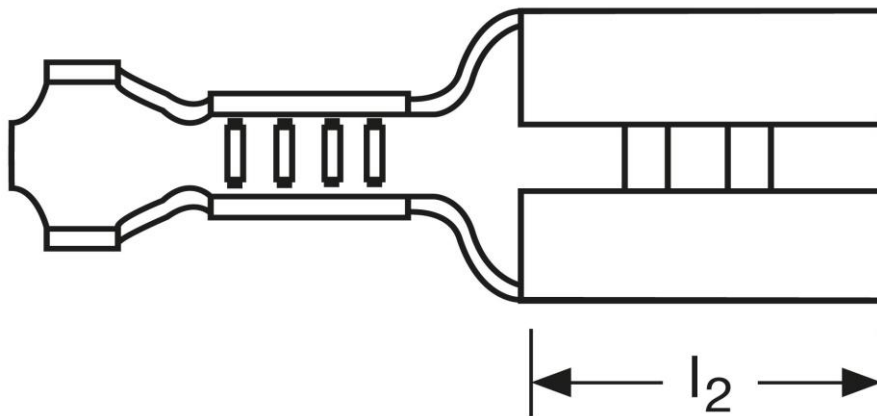
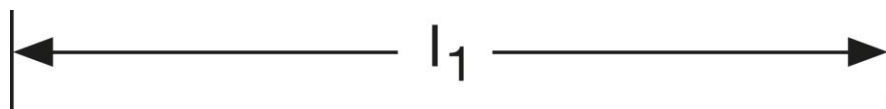


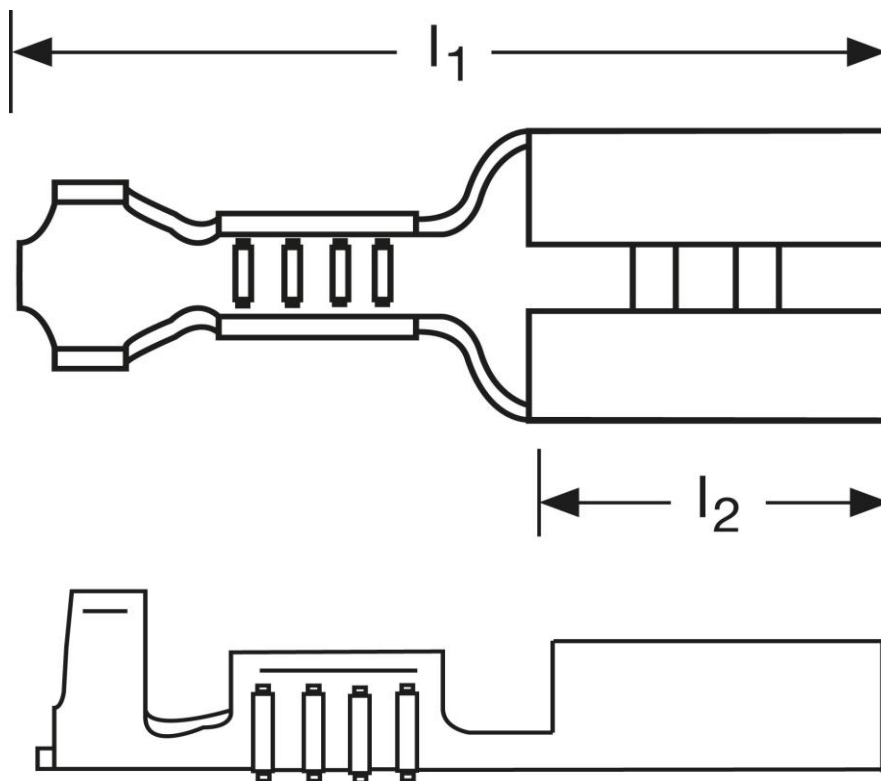
Flachsteckhülsen 1 mm²

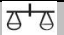



Art.Nr.	Werkstoff	Oberfläche		
F502481012	Messing	galv. Sn	0,50/1000	500
	l₁	l₂	Steckgröße	
in mm:	15,6	6,4	4,8 - 0,8	

Stand: 02.07.2018

Female disconnects 1 mm²



part no.	material	surface		
F502481012	brass	tin-plated	0,50/1000	500
	l₁	l₂	tab-size	
in mm:	15,6	6,4	4,8 - 0,8	

date: 02.07.2018