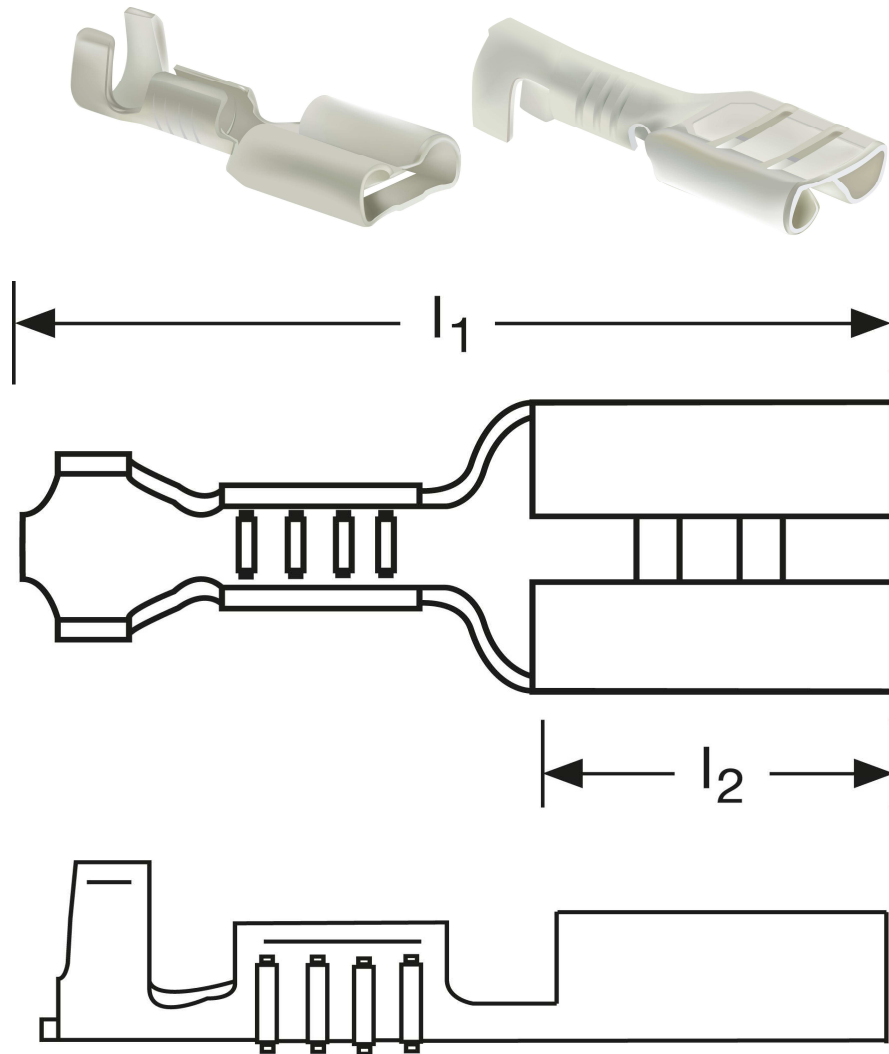


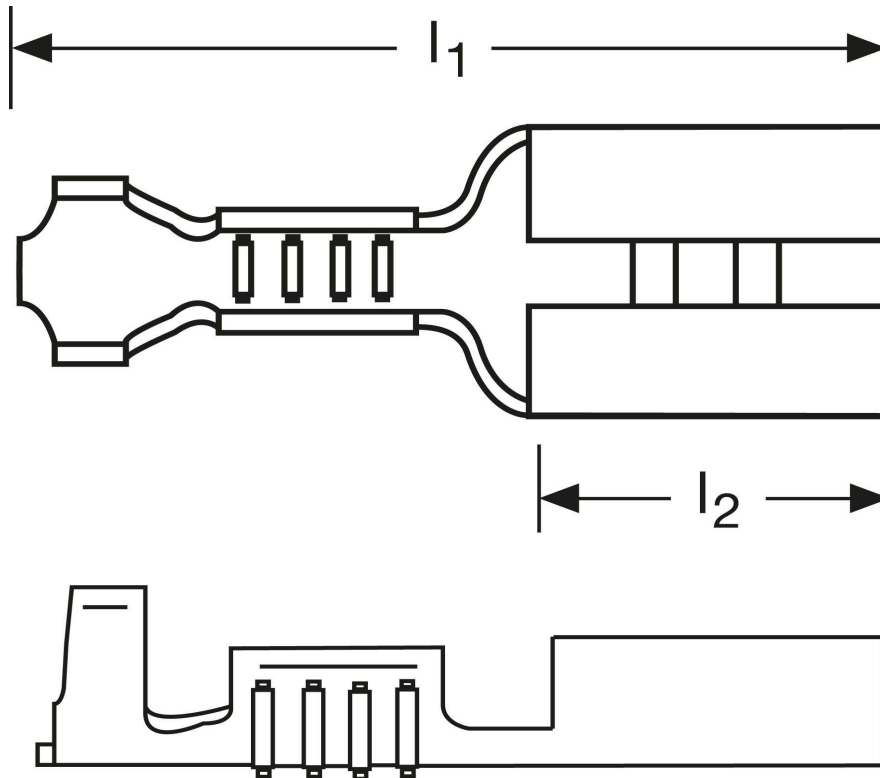
## Flachsteckhülsen 1 mm<sup>2</sup>



Art.Nr.	Werkstoff	Oberfläche	$\frac{\sigma}{\sigma}$	
F502481011	Messing	blank	0,50/1000	1.000
	$l_1$	$l_2$	Steckgröße	
in mm:	15,6	6,4	4,8 - 0,8	

Stand: 11.09.2014

## Female disconnects 1 mm<sup>2</sup>



part no.	material	surface		
F502481011	brass	bare	0,50/1000	1.000
	$l_1$	$l_2$	tab-size	
in mm:	15,6	6,4	4,8 - 0,8	

date: 11.09.2014