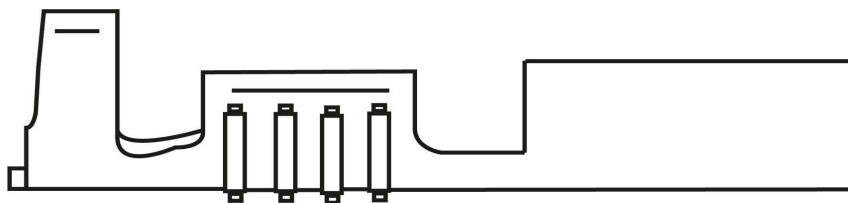
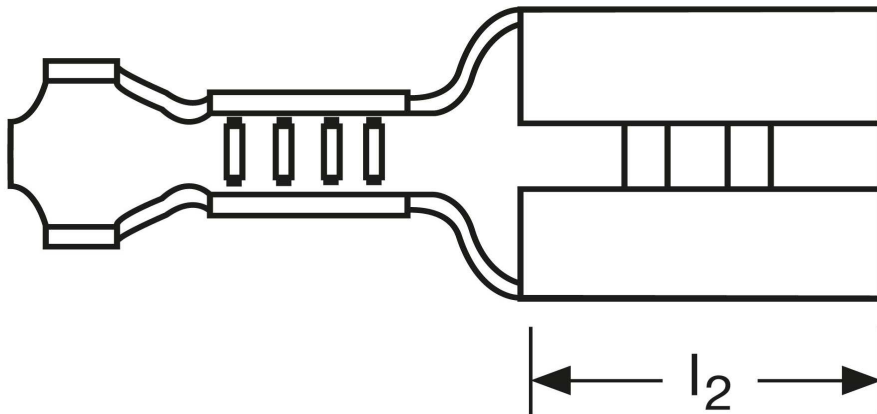
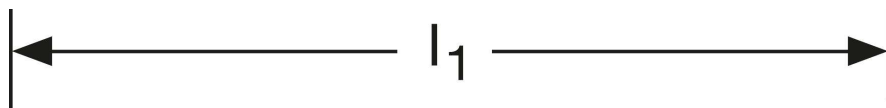
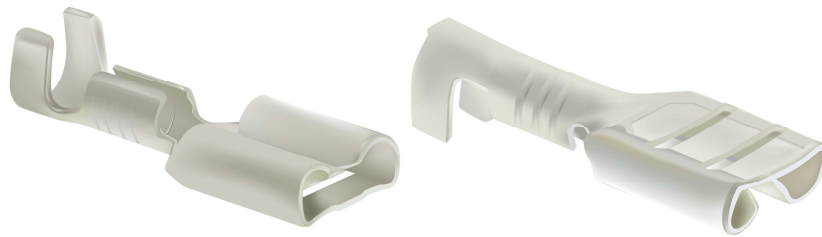


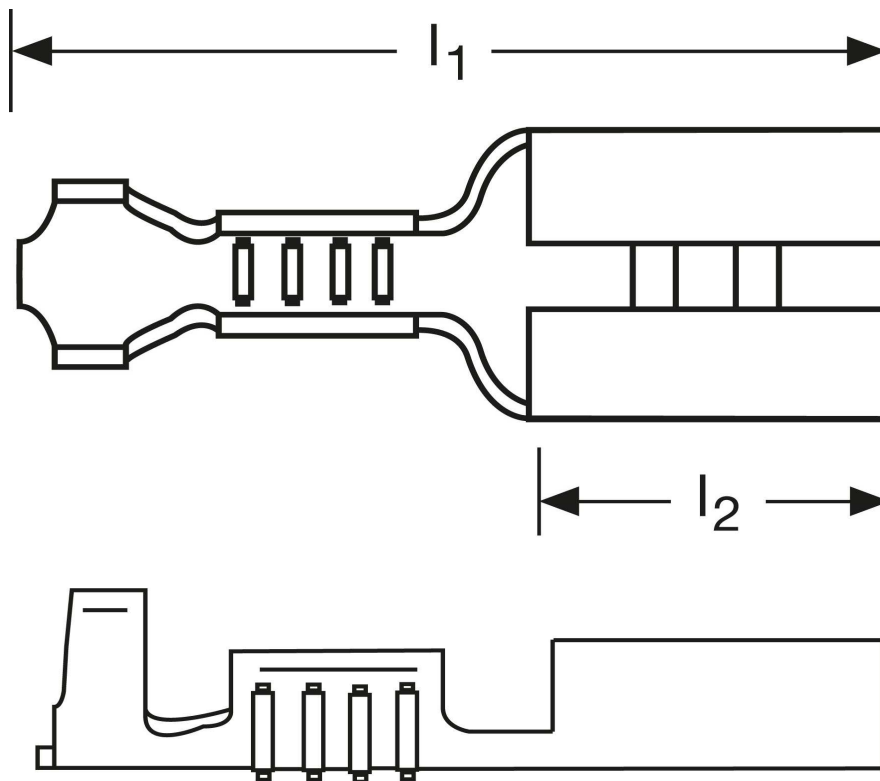
## Flachsteckhülsen 1 mm<sup>2</sup>



Art.Nr.	Werkstoff	Oberfläche		
F502282012	Messing	galv. Sn	0,23/1000	1.000
	$l_1$	$l_2$	Steckgröße	
in mm:	12,5	5	2,8 - 0,8	

Stand: 11.09.2014

## Female disconnects 1 mm<sup>2</sup>



part no.	material	surface		
F502282012	brass	tin-plated	0,23/1000	1.000
	$l_1$	$l_2$	tab-size	
in mm:	12,5	5	2,8 - 0,8	

date: 11.09.2014