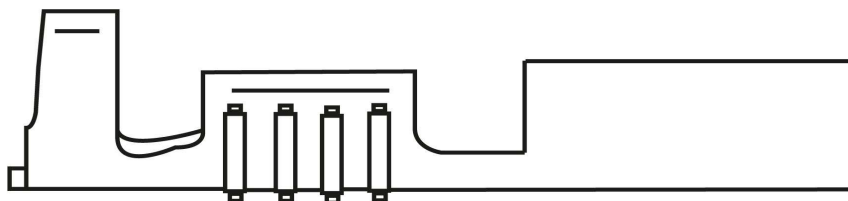
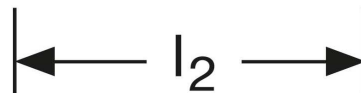
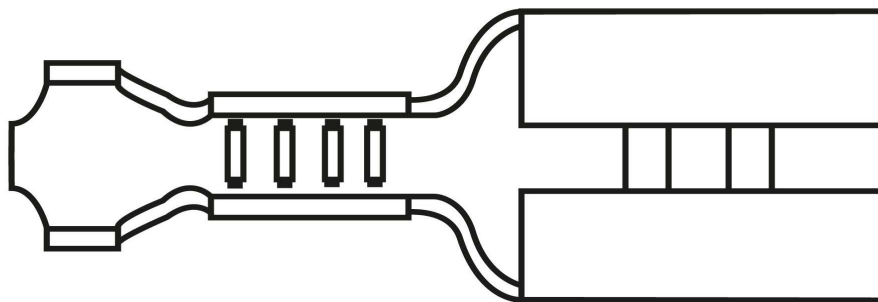
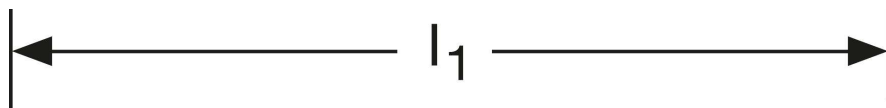
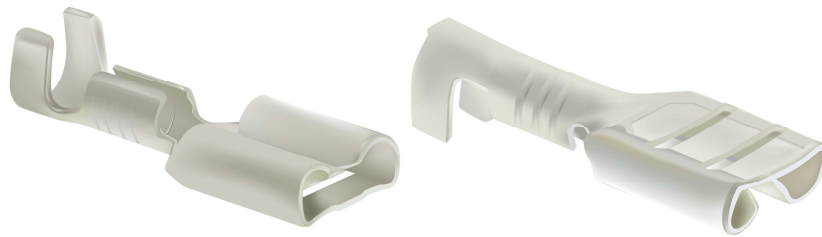


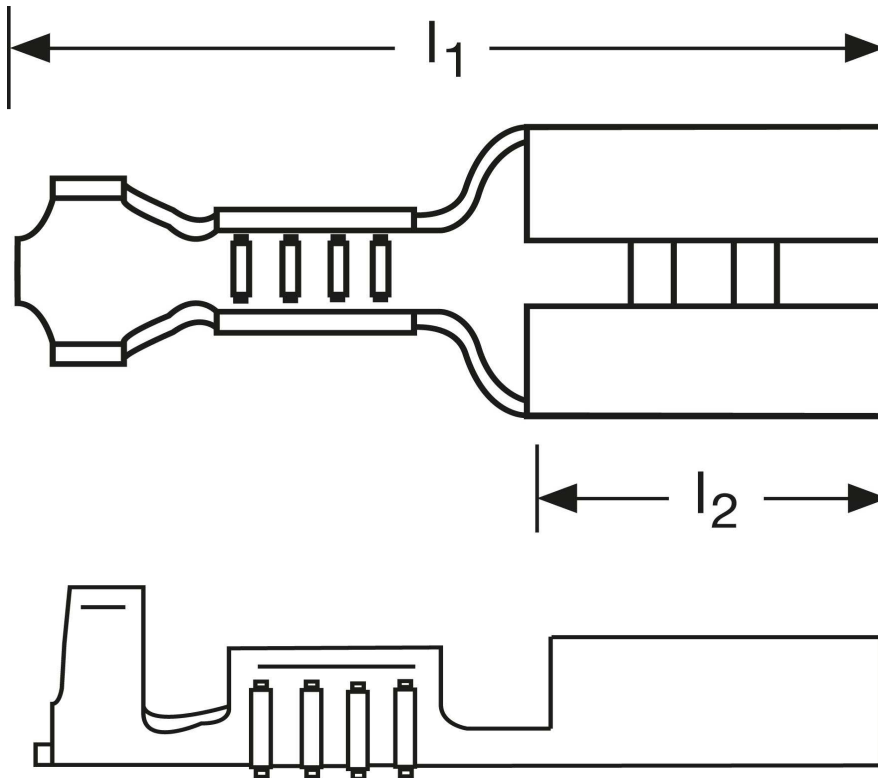
Flachsteckhülsen 1 mm²



Art.Nr.	Werkstoff	Oberfläche		
F502282011	Messing	blank	0,23/1000	1.000
	l_1	l_2	Steckgröße	
in mm:	12,5	5	2,8 - 0,8	

Stand: 11.09.2014

Female disconnects 1 mm²



part no.	material	surface		
F502282011	brass	bare	0,23/1000	1.000
	l_1	l_2	tab-size	
in mm:	12,5	5	2,8 - 0,8	

date: 11.09.2014