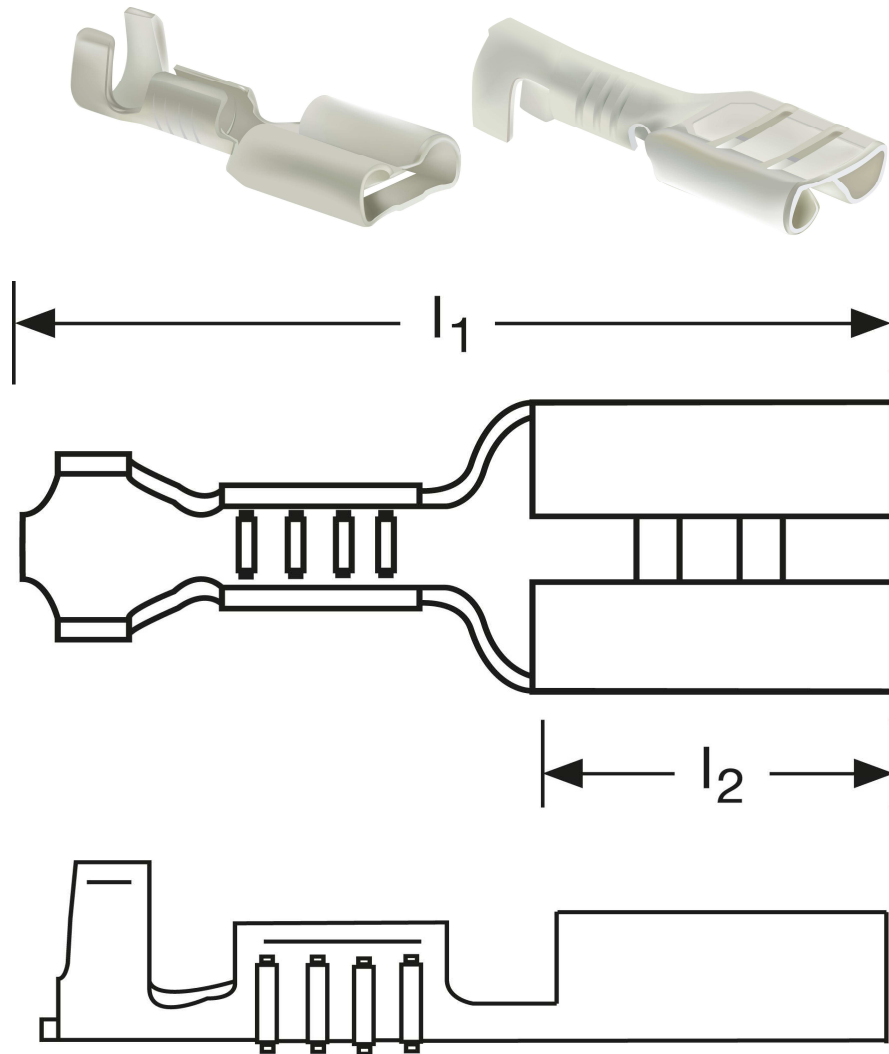


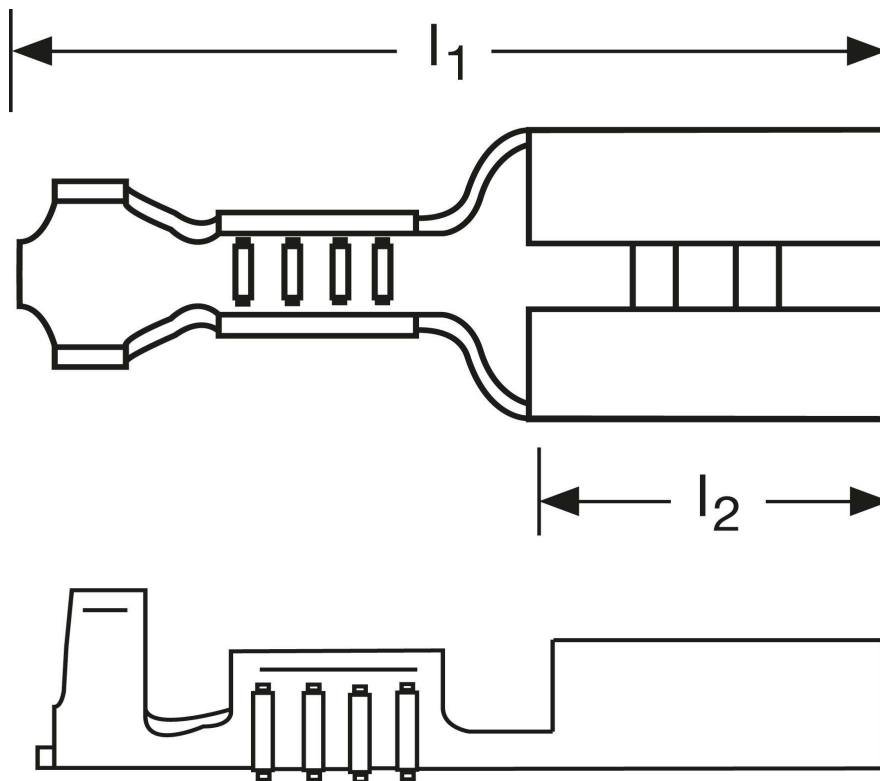
Flachsteckhülsen 1 mm²





Art.Nr.	Werkstoff	Oberfläche	$\frac{\sigma}{\sigma_0}$	
F 502281022	Bronze	galv. Sn	0,24/1000	1.000
	l_1	l_2	Steckgröße	
in mm:	14	6,3	2,8 - 0,5	

Stand: 11.09.2014

Female disconnects 1 mm²



part no.	material	surface		
F 502281022	bronze	tin-plated	0,24/1000	1.000
	l_1	l_2	tab-size	
in mm:	14	6,3	2,8 - 0,5	

date: 11.09.2014