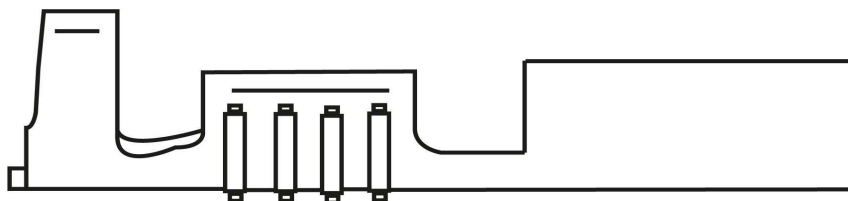
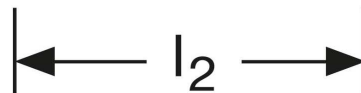
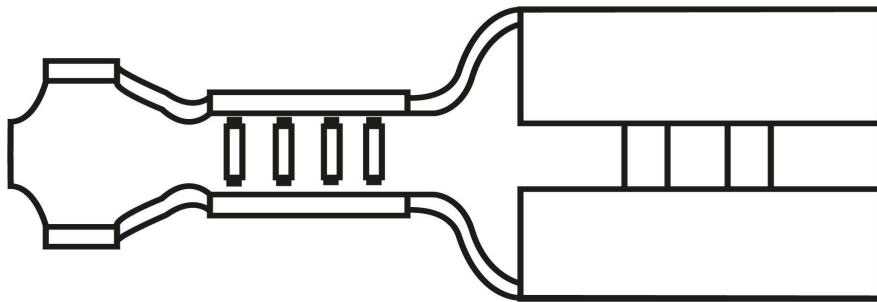
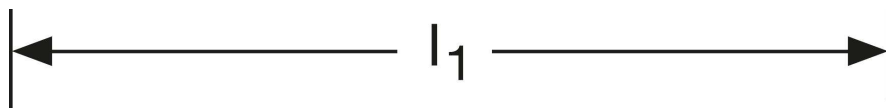


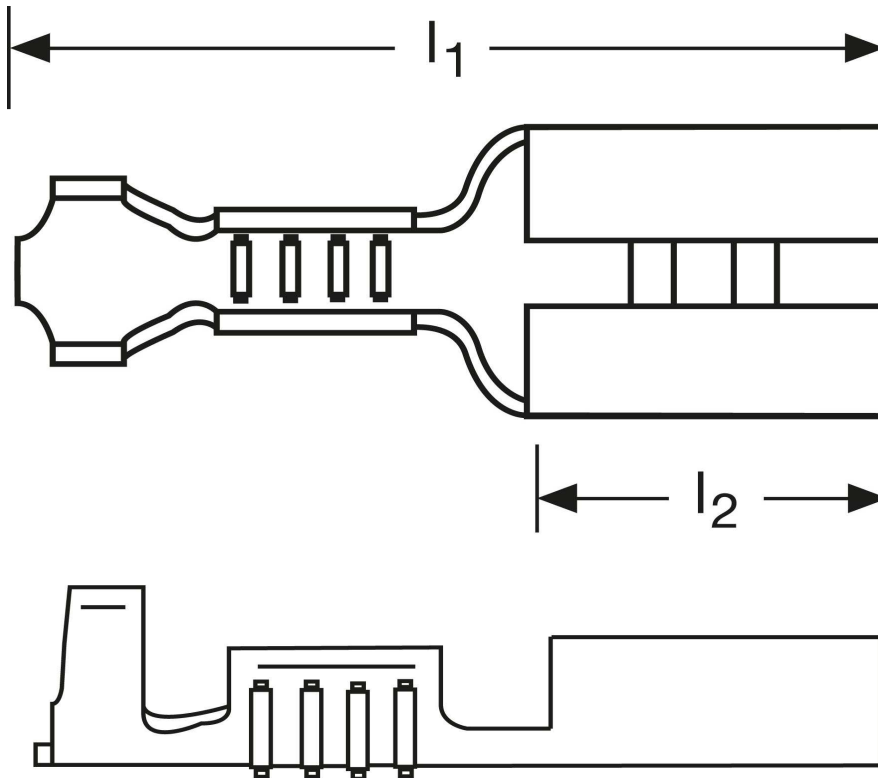
## Flachsteckhülsen 1 mm<sup>2</sup>





Art.Nr.	Werkstoff	Oberfläche		
F 502281011	Messing	blank	0,24/1000	1.000
	$l_1$	$l_2$	Steckgröße	
in mm:	14,5	6,2	2,8 - 0,5	

Stand: 11.09.2014

## Female disconnects 1 mm<sup>2</sup>



part no.	material	surface		
F 502281011	brass	bare	0,24/1000	1.000
	$l_1$	$l_2$	tab-size	
in mm:	14,5	6,2	2,8 - 0,5	

date: 11.09.2014