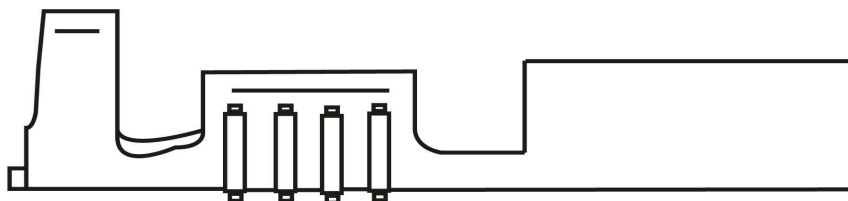
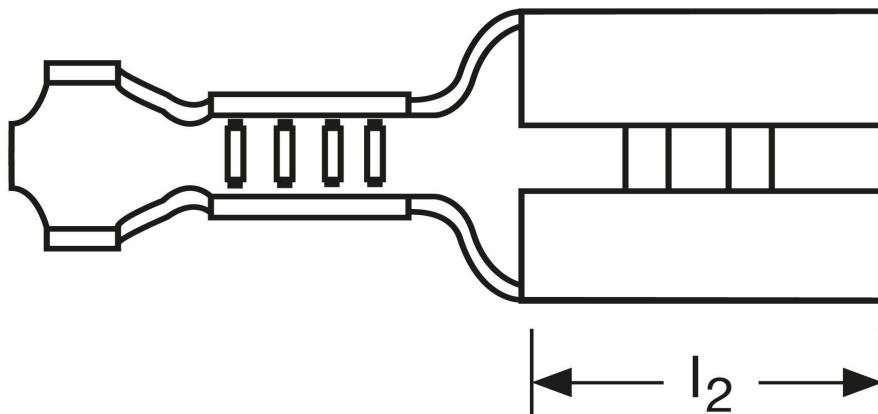
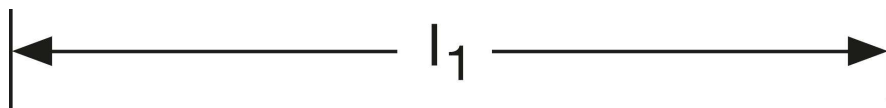


## Flachsteckhülsen 0,3 mm<sup>2</sup>

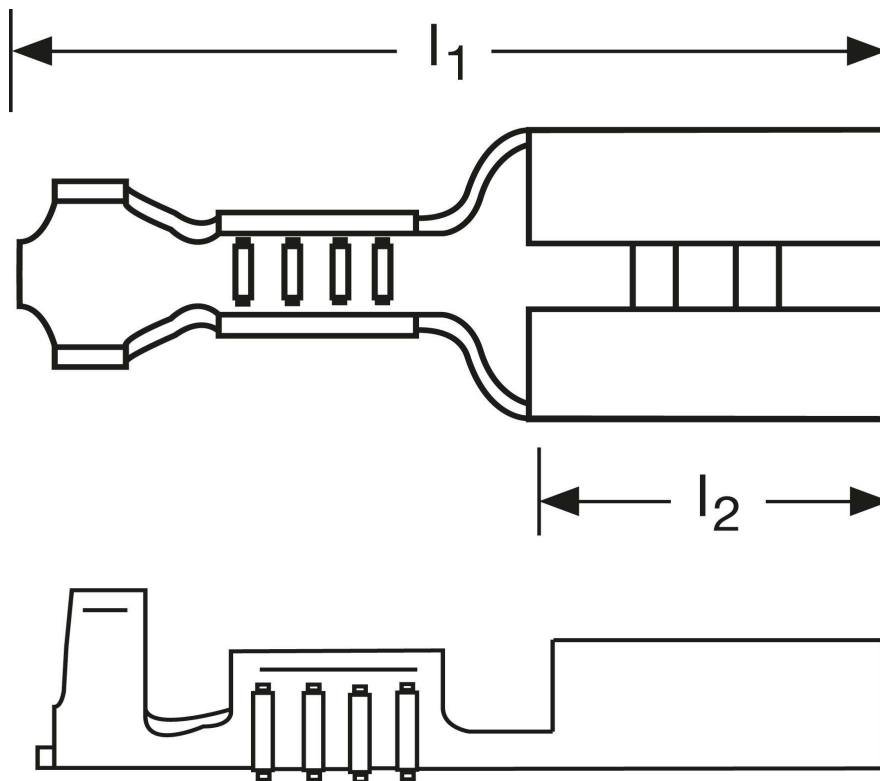




Art.Nr.	Werkstoff	Oberfläche		
F501283022	Zinnbronze	verzinnt	0,20/1000	1.000
	$l_1$	$l_2$	Steckgröße	Form
in mm:	14	6,25	2,8 - 0,5	B

Stand: 22.09.2014

## Female disconnects

0,3 mm<sup>2</sup>



part no.	material	surface		
F501283022	zinc bronze	tin-plated	0,20/1000	1.000
	$l_1$	$l_2$	tab-size	form
in mm:	14	6,25	2,8 - 0,5	B

date: 22.09.2014