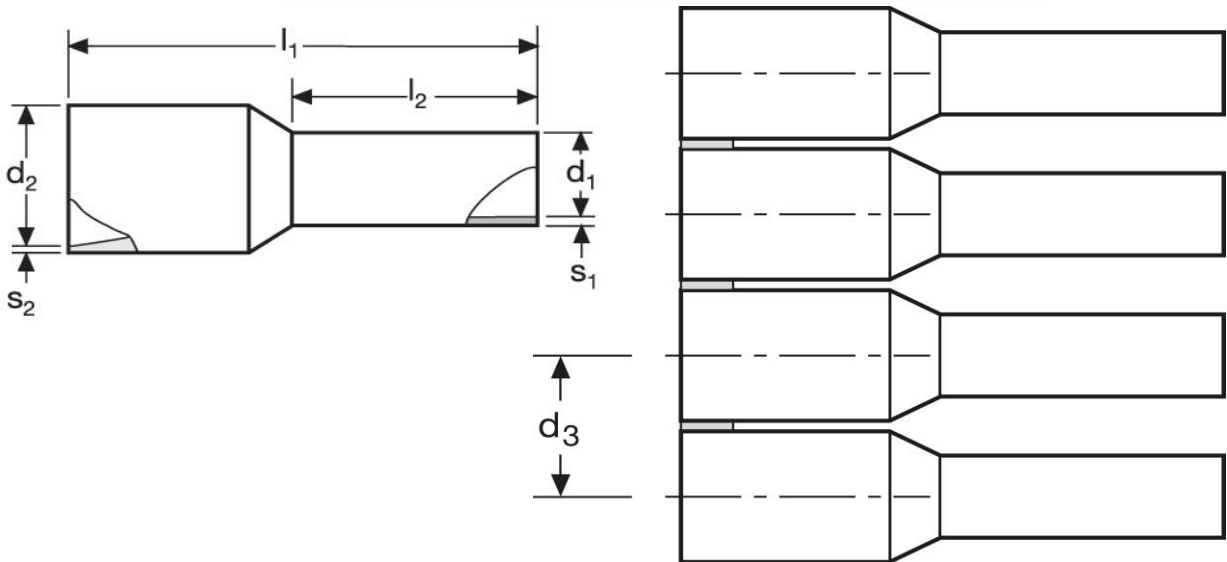






## Aderendhülsen - Bandware

2,5 mm<sup>2</sup> N - Mittelspule



Material	Isolation	
E-Cu, gal. Sn	PP	3.000

$l_1$	$l_2$	$d_1$	$s_1$	$s_2$
14	8	2,2	0,15	0,25

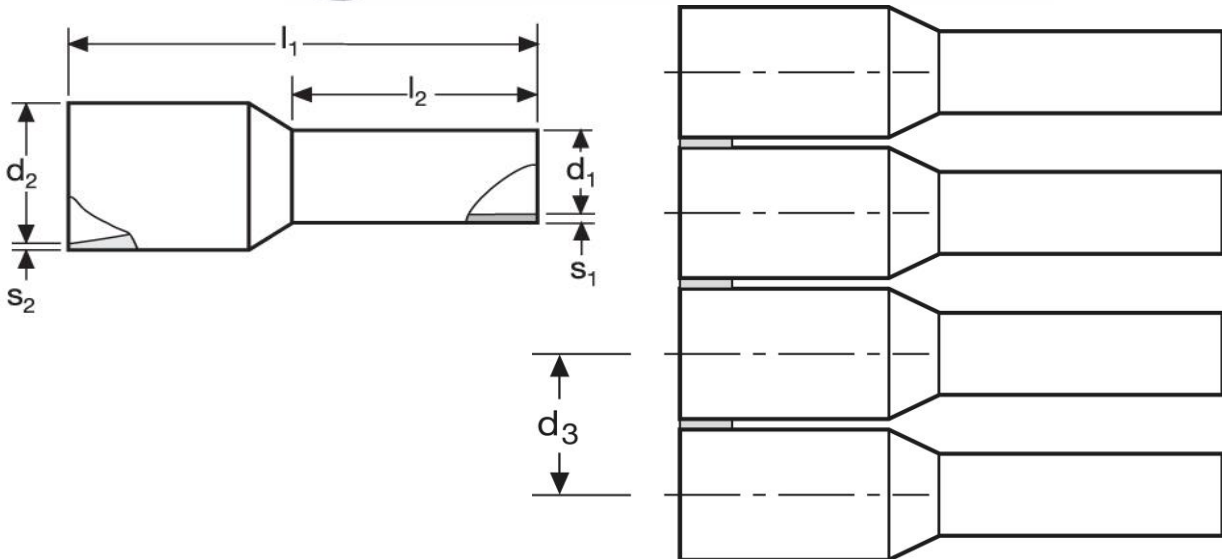
$d_2$	$d_3$	WE	TM	DIN
4,0	5,0	A 284015	A 284025	A 284035
		blau	grau	blau
				

\*Maße in mm

Stand: 07.01.2019




## Cord end- sleeves - on reel

2,5 mm<sup>2</sup> N - medium spool



material	insulation	
E-Cu, gal. Sn	PP	3.000

$l_1$	$l_2$	$d_1$	$s_1$	$s_2$
14	8	2,2	0,15	0,25

$d_2$	$d_3$	WE	TM	DIN
4,0	5,0	A 284015	A 284025	A 284035
		blue	grey	blue
				

\*Dimensions in mm

date: 07.01.2019