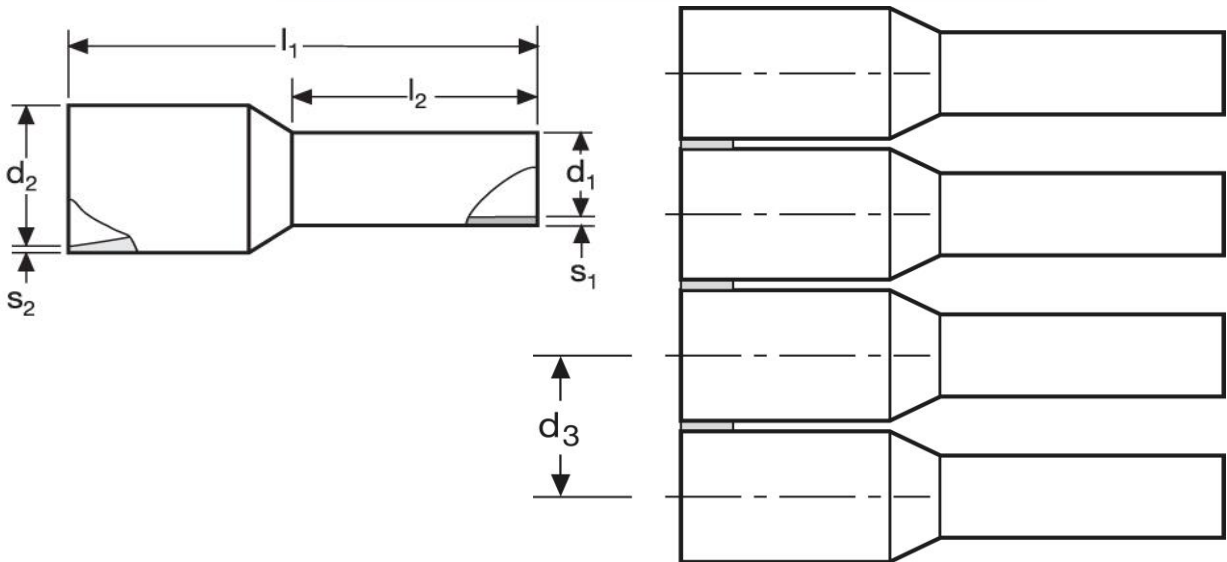






## Aderendhülsen - Bandware

2,5 mm<sup>2</sup> N - Kleinspule



Material	Isolation	
E-Cu, gal. Sn	PP	1.500

$l_1$	$l_2$	$d_1$	$s_1$	$s_2$
14,5	8	2,3	0,15	0,40

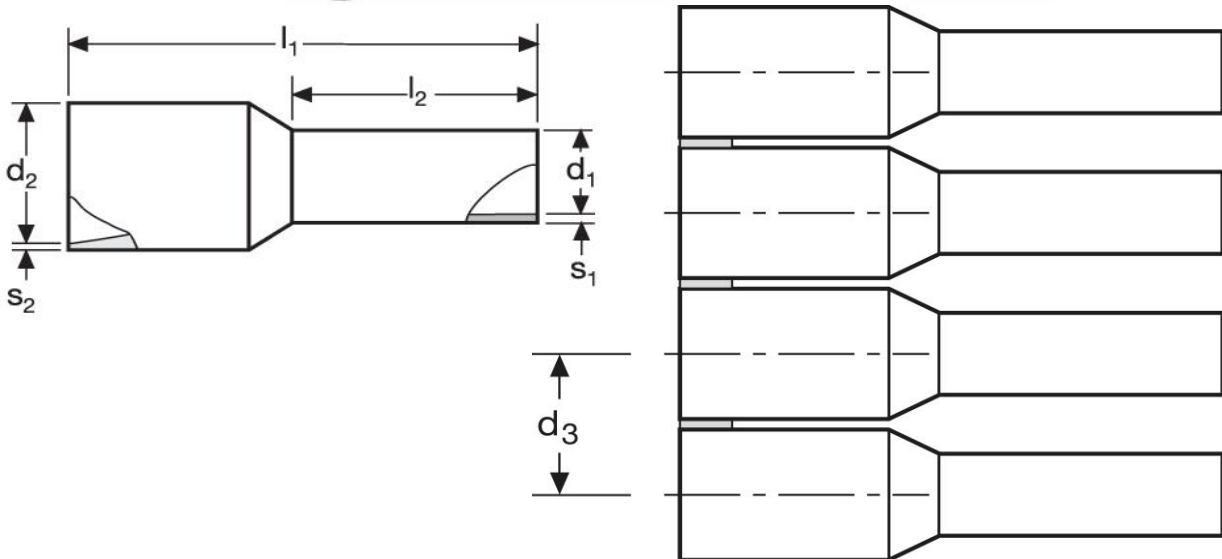
$d_2$	$d_3$	WE	TM	DIN
4,2	5,0	A 284012	A 284022	A 284032
		blau	grau	blau
				

\*Maße in mm

Stand: 07.01.2019




## Cord end- sleeves - on reel

2,5 mm<sup>2</sup> N - small spool



material	insulation	
E-Cu, gal. Sn	PP	1.500

$l_1$	$l_2$	$d_1$	$s_1$	$s_2$
14,5	8	2,3	0,15	0,40

$d_2$	$d_3$	WE	TM	DIN
4,2	5,0	A 284012	A 284022	A 284032
		blue 	grey 	blue 

\*Dimensions in mm

date: 07.01.2019