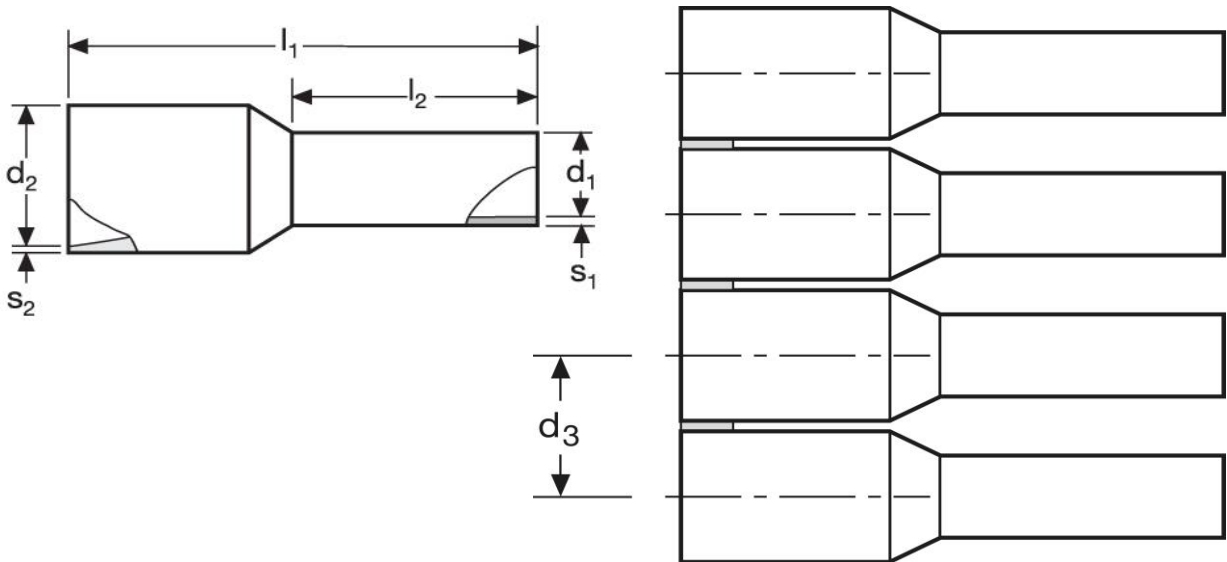






## Aderendhülsen - Bandware

1 mm<sup>2</sup> N - Großspule



Material	Isolation	
E-Cu, gal. Sn	PP	7.500

$l_1$	$l_2$	$d_1$	$s_1$	$s_2$
14	8	1,4	0,15	0,30

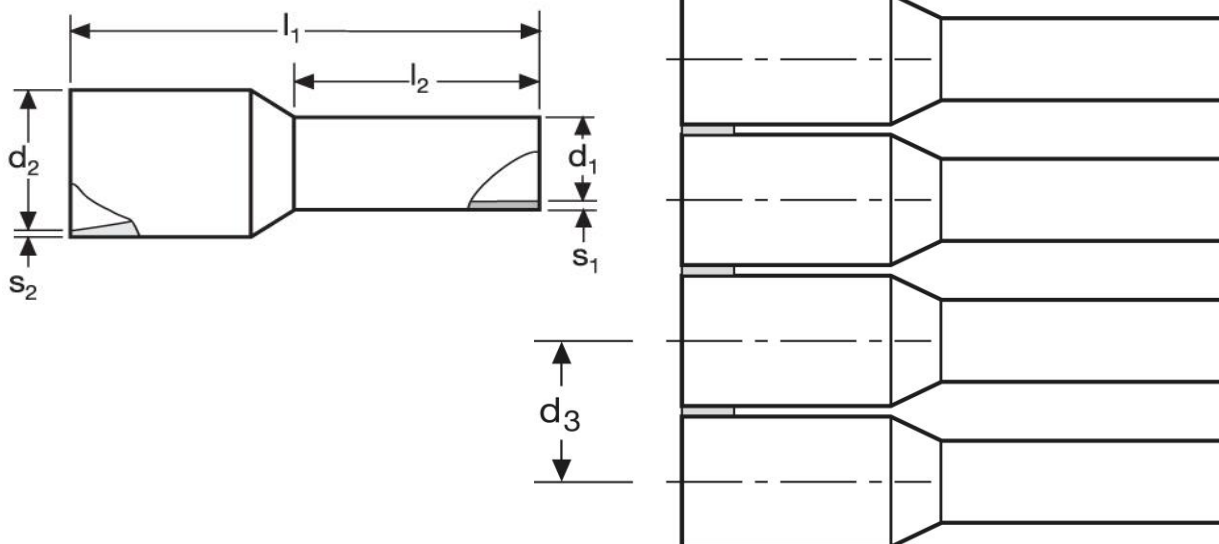
$d_2$	$d_3$	WE	TM	DIN
3,0	4,2	A 282013	A 282023	A 282033
		gelb	rot	rot
				


\*Maße in mm

Stand: 07.01.2019




## Cord end- sleeves - on reel

1 mm<sup>2</sup> N - large spool



material	insulation	
E-Cu, gal. Sn	PP	7.500

$l_1$	$l_2$	$d_1$	$s_1$	$s_2$
14	8	1,4	0,15	0,30

$d_2$	$d_3$	WE	TM	DIN
3,0	4,2	A 282013	A 282023	A 282033
		yellow	red	red
				

\*Dimension in mm

date: 07.01.2019