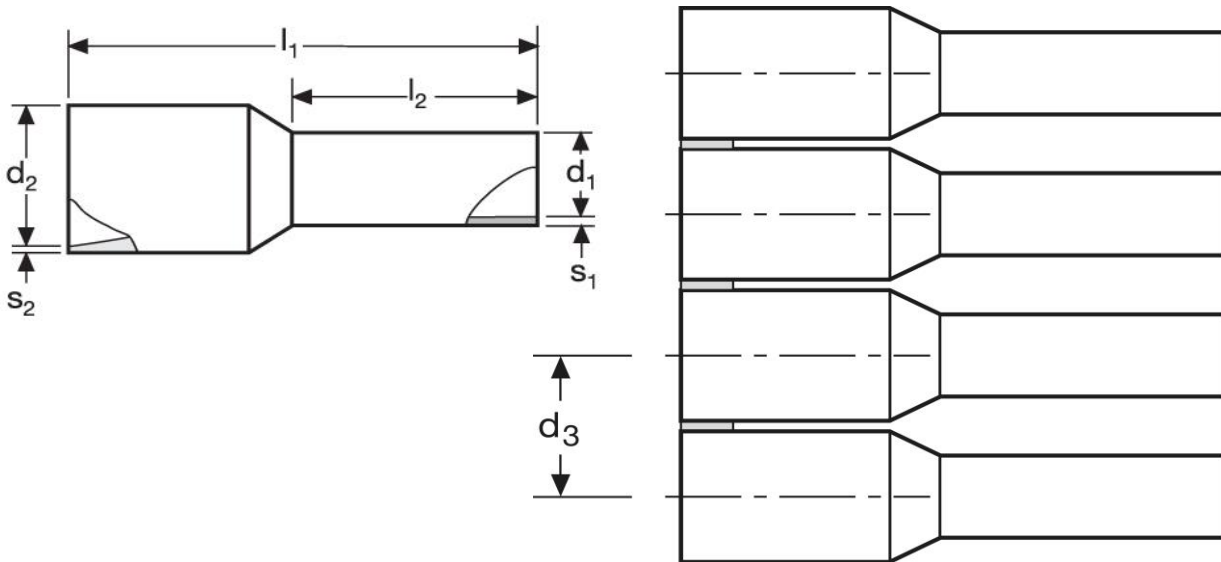






## Aderendhülsen - Bandware

0,75 mm<sup>2</sup> N - Kleinspule



Material	Isolation	
E-Cu, gal. Sn	PP	3.000

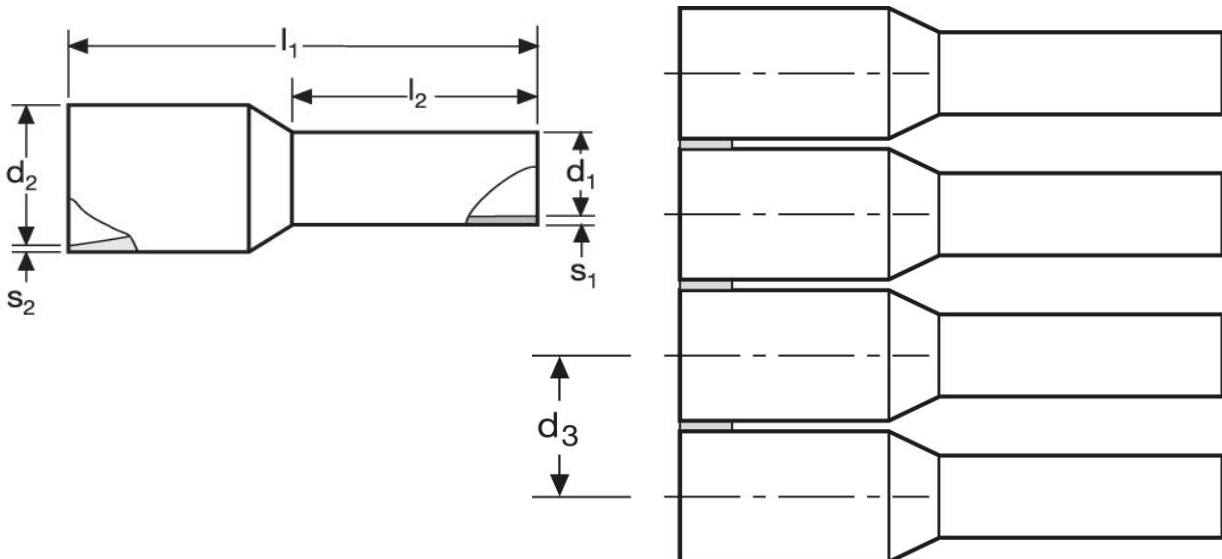
$l_1$	$l_2$	$d_1$	$s_1$	$s_2$
14,5	8	1,3	0,15	0,30


$d_2$	$d_3$	WE	TM	DIN
2,8	3,6	A 281012	A 281022	A 281032
		weiß	blau	grau
				

\*Maße in mm




Stand: 07.01.2019

**Cord end- sleeves - on reel**  
0,75 mm<sup>2</sup> N - small spool



material	insulation	
E-Cu, gal. Sn	PP	3.000

$l_1$	$l_2$	$d_1$	$s_1$	$s_2$
14,5	8	1,3	0,15	0,30

$d_2$	$d_3$	WE	TM	DIN
2,8	3,6	A 281012	A 281022	A 281032
		white	blue	grey
				

\*Dimensions in mm

date: 07.01.2019