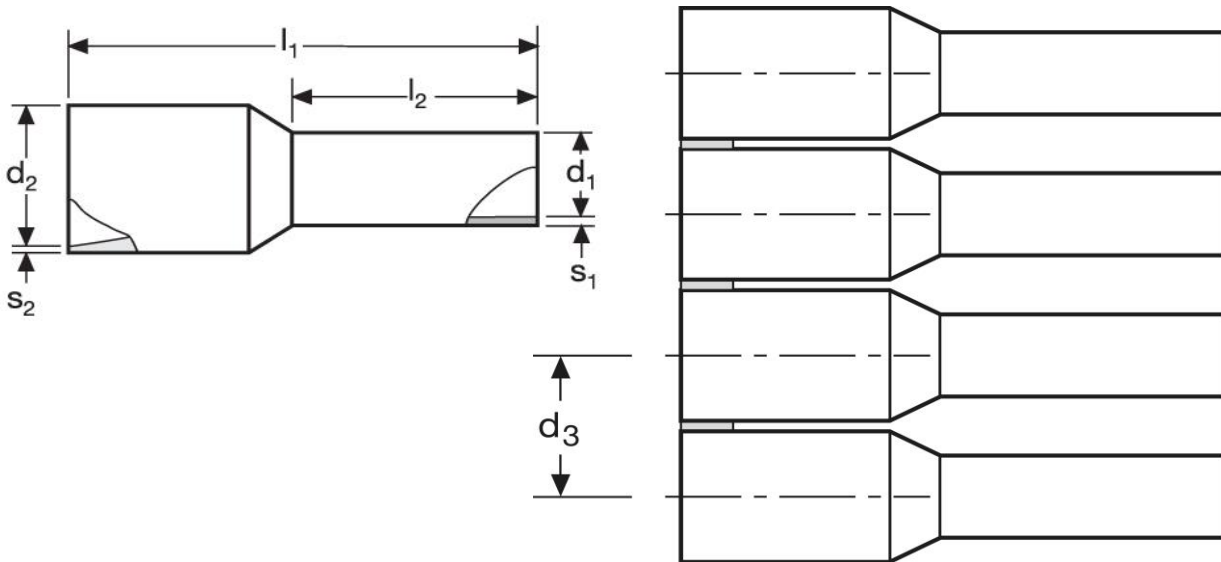





## Aderendhülsen - Bandware

0,75 mm<sup>2</sup> N - PE-Spule



Material	Isolation	
E-Cu, gal. Sn	PP	1.100

$l_1$	$l_2$	$d_1$	$s_1$	$s_2$
14	8	1,2	0,15	0,30

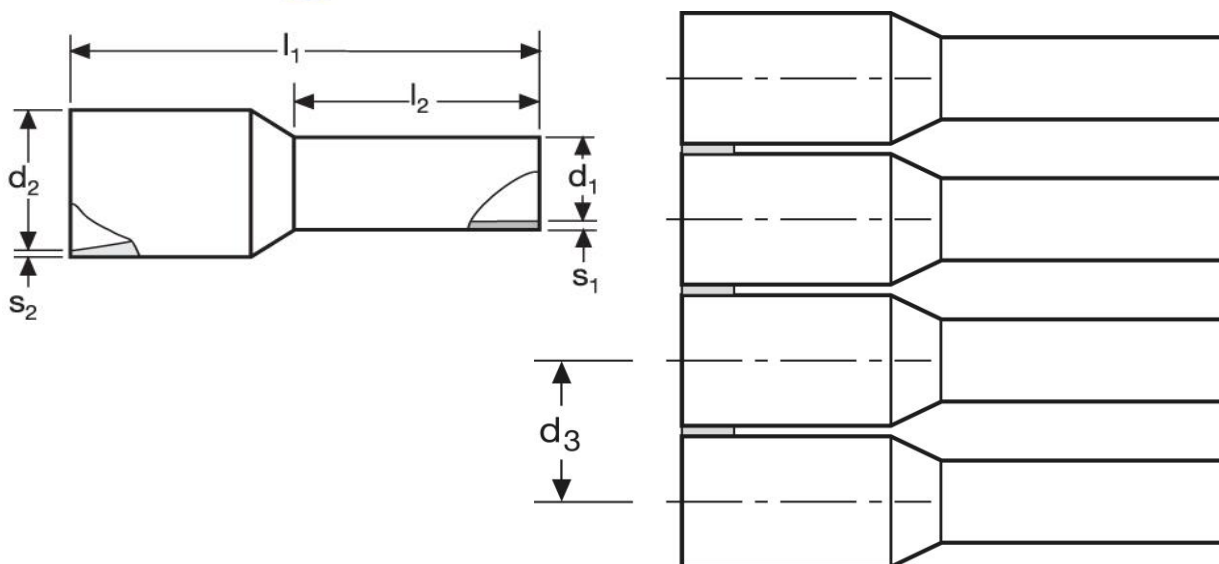
$d_2$	$d_3$	WE	TM	DIN
2,8	3,6	A 281011	A 281021	A 281031
		weiß 	blau 	grau 


\*Maße in mm

Stand: 07.01.2019




## Cord end- sleeves - on reel

0,75 mm<sup>2</sup> N - PE-spool



material	insulation	
E-Cu, gal. Sn	PP	1.100

$l_1$	$l_2$	$d_1$	$s_1$	$s_2$
14	8	1,2	0,15	0,30

$d_2$	$d_3$	WE	TM	DIN
2,8	3,6	A 281011	A 281021	A 281031
		white	blue	grey
				

\*Dimensions in mm

date: 07.01.2019