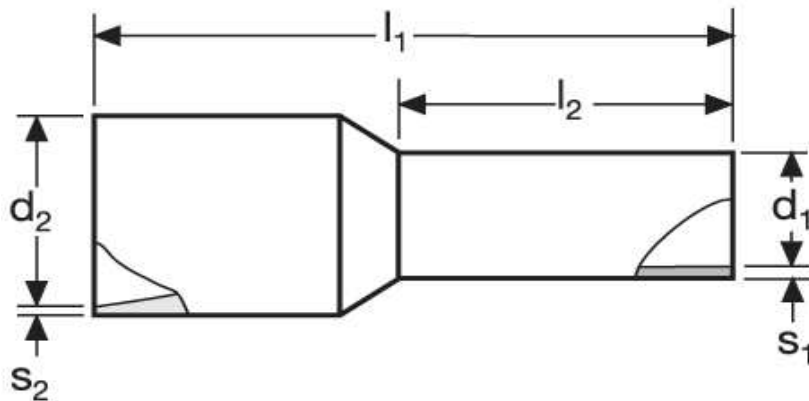
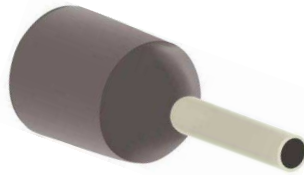


## Aderendhülsen für kurzschluss sichere Leitungen 2,5 mm<sup>2</sup> L



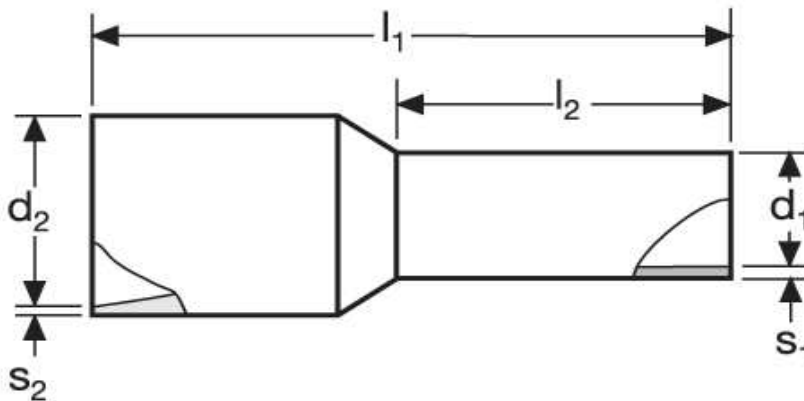
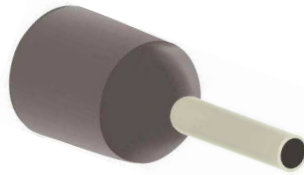
Material	Isolation		
E-Cu, gal. Sn	PA	0,352 / 1000	100

	$l_1$	$l_2$	$d_1$	$s_1$
in mm:	21,6	12	2,3	0,15

	$d_2$	$s_2$	WE	TM	DIN
	7,8	0,6	A 20710-SI blau	A 22710-SI grau	A 24510-SI blau

Stand: 17.07.2014

**Cord end - sleeves**  
for short-circuit resistant conductors  
2,5 mm<sup>2</sup> L



material	insulation		
E-Cu, gal. Sn	PA	0,352 / 1000	100

	$l_1$	$l_2$	$d_1$	$s_1$
in mm:	21,6	12	2,3	0,15

		WE	TM	DIN
$d_2$	$s_2$	A 20710-SI	A 22710-SI	A 24510-SI
7,8	0,6	blue 	grey 	blue 

date: 17.07.2014