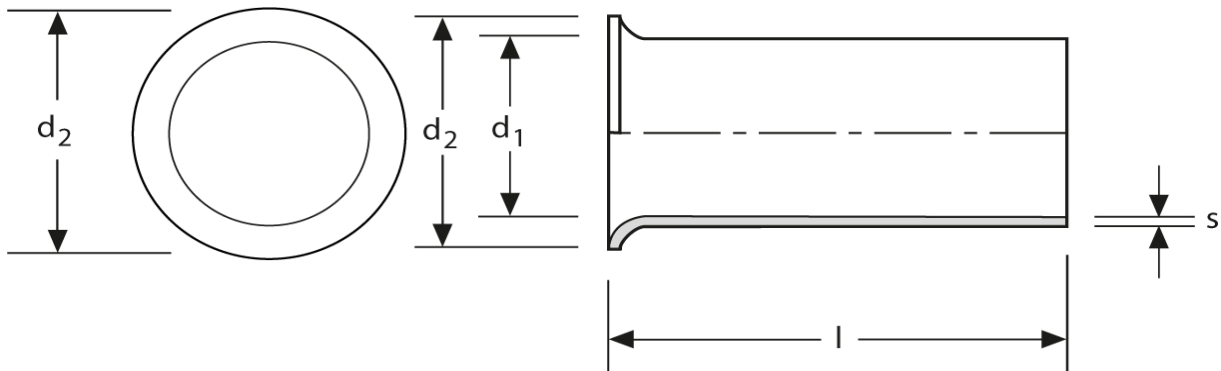


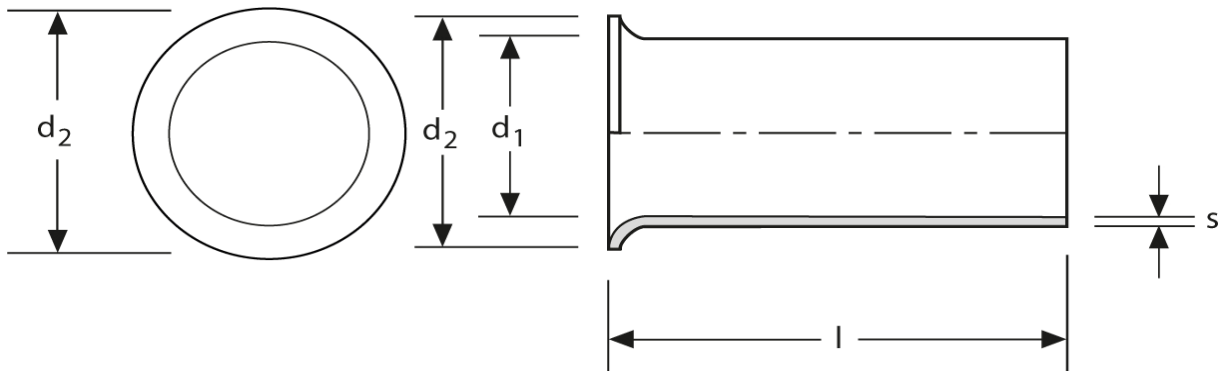
Twin - Aderendhülsen
Typ A - runder Kragen
16 mm² - 18 mm



Art.Nr.	Werkstoff	Oberfläche		
A 1731410	Cu-ETP	galv. Sn	1,090/1000	500
	l	d₁	d₂	s
in mm:	18	8,4	11,0	0,20

Stand: 04.07.2014

Twin cord end-sleeves
type A - round collar
16 mm² - 18 mm



part no.	material	surface		
A 1731410	Cu-ETP	tin-plated	1,090/1000	500
	l	d₁	d₂	s
in mm:	18	8,4	11,0	0,20

date: 04.07.2014