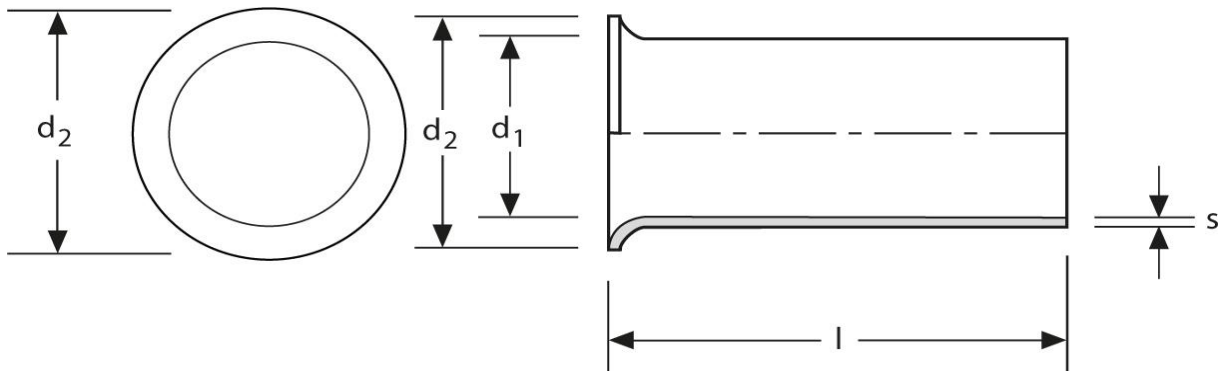


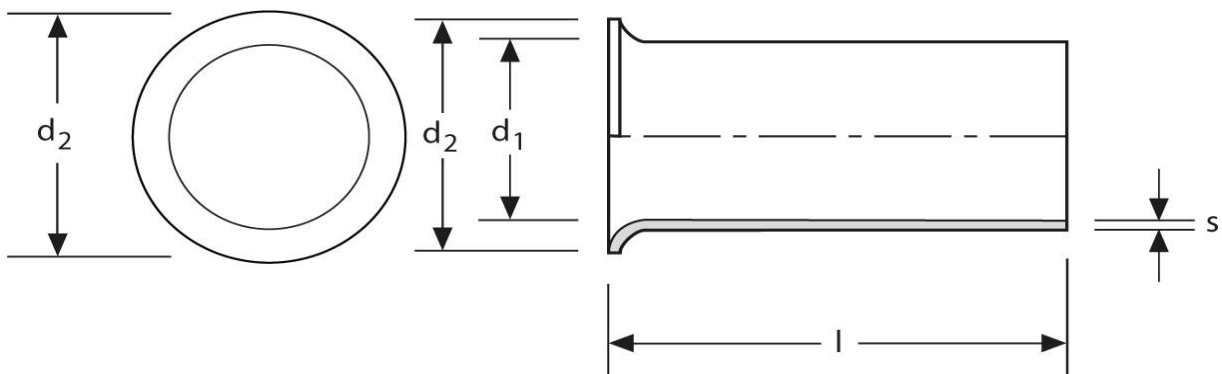
Twin - Aderendhülsen
 Typ A - runder Kragen
 10 mm² - 18 mm



Art.Nr.	Werkstoff	Oberfläche		
A 1721810	Cu-ETP	galv. Sn	0,960/1000	500
	l	d₁	d₂	s
in mm:	18	7,4	9,5	0,20

Stand: 02.01.2018

Twin cord end-sleeves
type A - round collar
10 mm² - 18 mm



part no.	material	surface		
A 1721810	Cu-ETP	tin-plated	0,960/1000	500
	l	d₁	d₂	s
in mm:	18	7,4	9,5	0,20

date: 02.01.2018