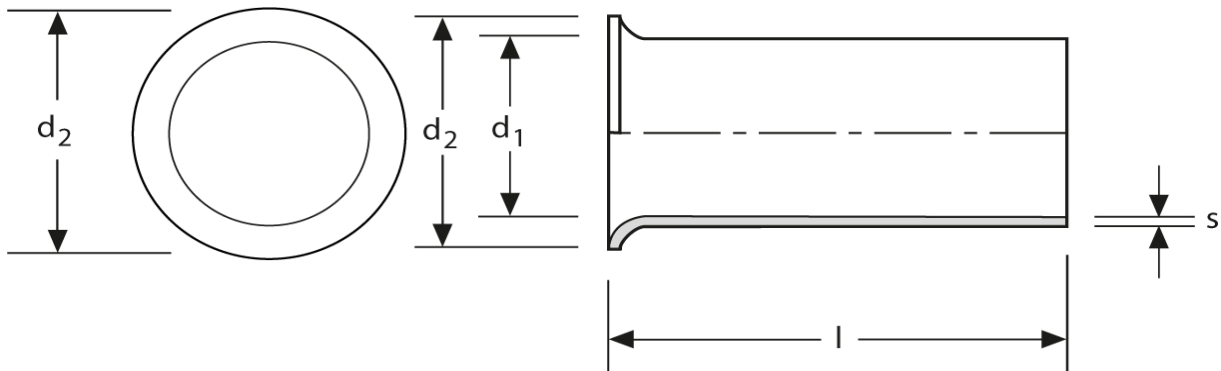


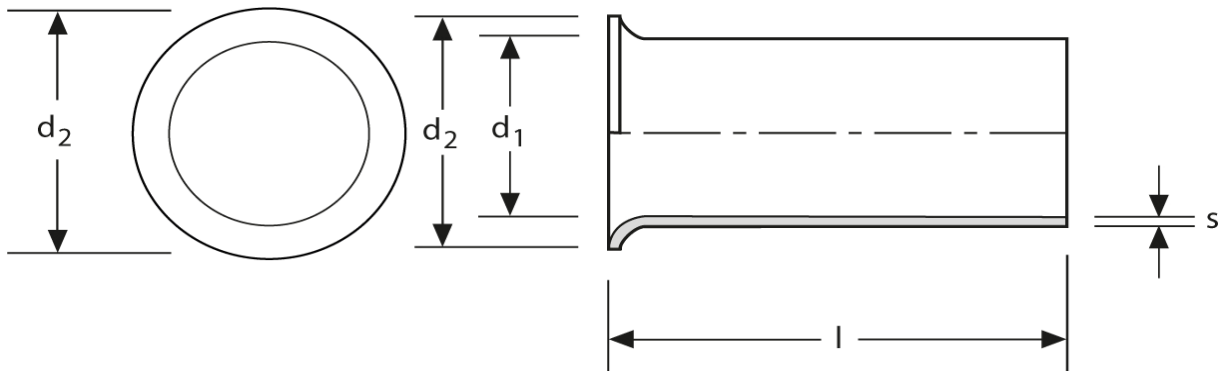
Twin - Aderendhülsen
Typ A - runder Kragen
10 mm² - 15 mm



Art.Nr.	Werkstoff	Oberfläche		
A 1721410	Cu-ETP	galv. Sn	0,790/1000	500
	l	d₁	d₂	s
in mm:	15	7,4	9,5	0,20

Stand: 04.07.2014

Twin cord end-sleeves
type A - round collar
10 mm² - 15 mm



part no.	material	surface		
A 1721410	Cu-ETP	tin-plated	0,790/1000	500
	l	d₁	d₂	s
in mm:	15	7,4	9,5	0,20

date: 04.07.2014