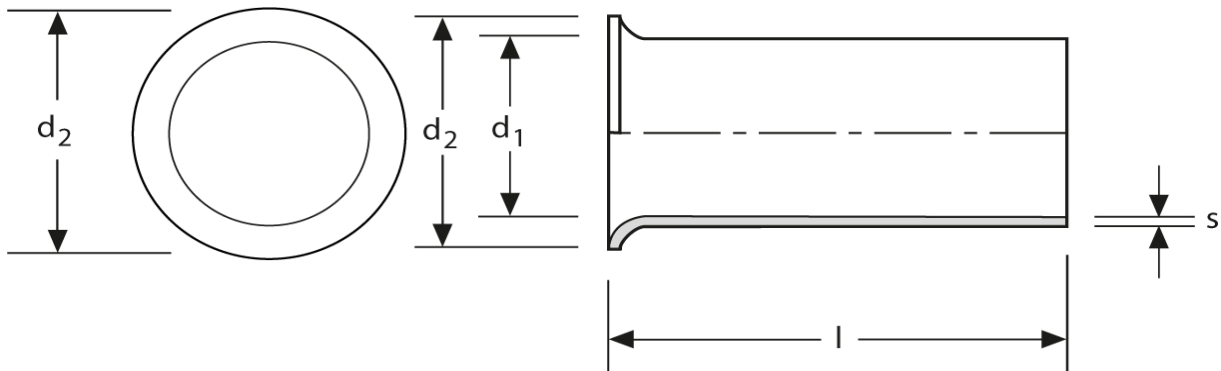


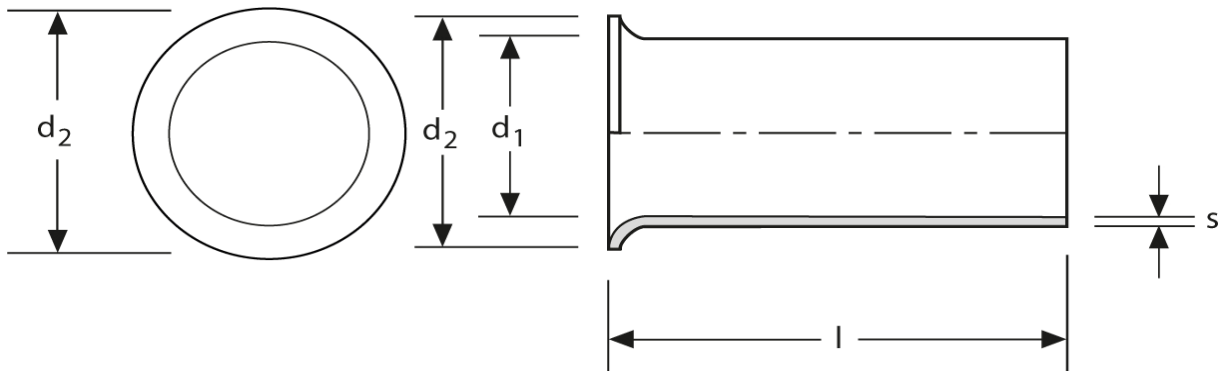
**Aderendhülsen Twin**  
Typ A - runder Kragen  
6 mm<sup>2</sup> - 12 mm



Art.Nr.	Werkstoff	Oberfläche		
A 1711410	Cu-ETP	galv. Sn	0,346/1000	1.000
	<b>l</b>	<b>d<sub>1</sub></b>	<b>d<sub>2</sub></b>	<b>s</b>
<b>in mm:</b>	<b>12</b>	<b>4,6</b>	<b>5,8</b>	<b>0,20</b>

Stand: 04.07.2014

**Twin cord end-sleeves**  
 type A - round collar  
 6 mm<sup>2</sup> - 12 mm



part no.	material	surface		
A 1711410	Cu-ETP	tin-plated	0,346/1000	1.000
	<b>l</b>	<b>d<sub>1</sub></b>	<b>d<sub>2</sub></b>	<b>s</b>
<b>in mm:</b>	<b>12</b>	<b>4,6</b>	<b>5,8</b>	<b>0,20</b>

date: 04.07.2014