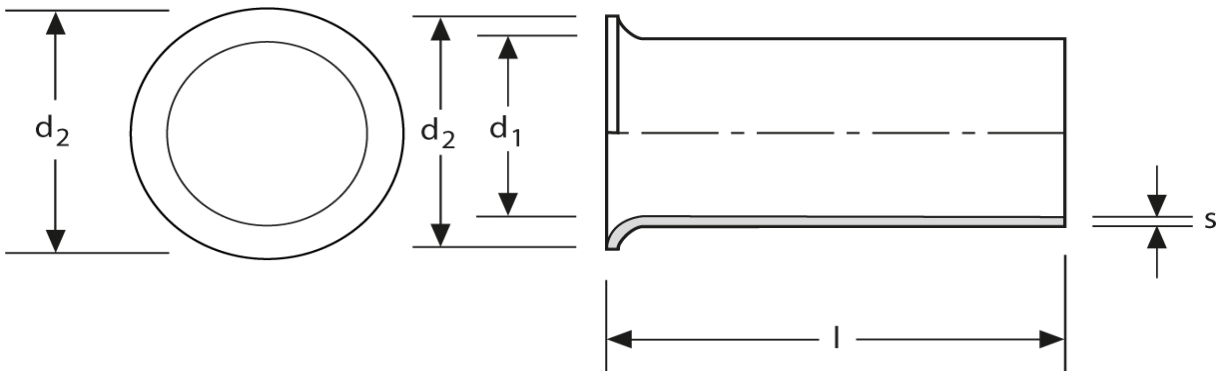


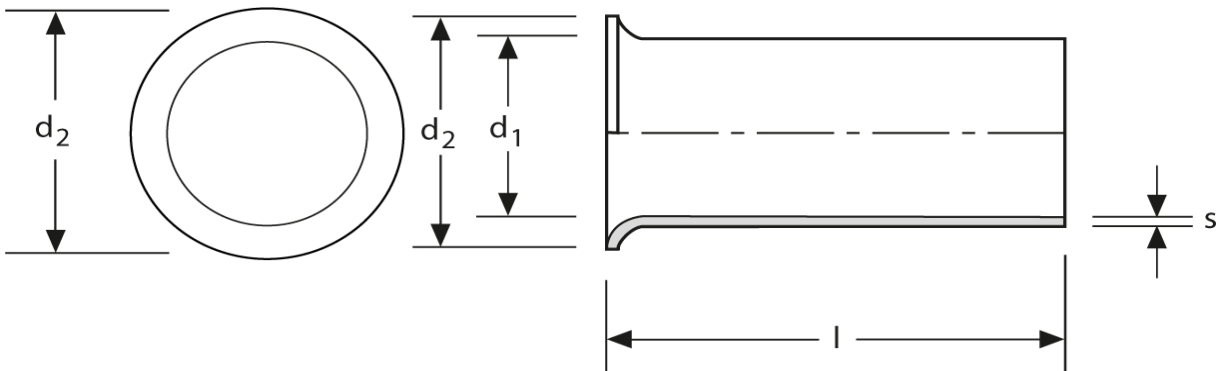
Twin - Aderendhülsen
Typ A - runder Kragen
2,5 mm² - 10 mm



Art.Nr.	Werkstoff	Oberfläche		
A 1691010	Cu-ETP	galv. Sn	0,185/1000	1.000
	l	d₁	d₂	s
in mm:	10	2,9	4,0	0,20

Stand: 04.07.2014

Twin cord end-sleeves
 type A - round collar
 2,5 mm² - 10 mm



part no.	material	surface		
A 1691010	Cu-ETP	tin-plated	0,185/1000	1.000
	l	d₁	d₂	s
in mm:	10	2,9	4,0	0,20

date: 04.07.2014